



## **Cemiplimab for locally advanced and metastatic cutaneous squamous-cell carcinomas: Real-life experience from the French CAREPI study group**

Candice Hober, Lisa Fredeau, Anne Pham-Ledard, Marouane Boubaya, Florian Herms, Philippe Celerier, François Aubin, Nathalie Beneton, Monica Dinulescu, Arnaud Jannic, et al.

### **► To cite this version:**

Candice Hober, Lisa Fredeau, Anne Pham-Ledard, Marouane Boubaya, Florian Herms, et al.. Cemiplimab for locally advanced and metastatic cutaneous squamous-cell carcinomas: Real-life experience from the French CAREPI study group. *Cancers*, 2021, 13 (14), 14 p. 10.3390/cancers13143547 . hal-03332168

**HAL Id: hal-03332168**

**<https://hal.inrae.fr/hal-03332168>**

Submitted on 2 Sep 2021

**HAL** is a multi-disciplinary open access archive for the deposit and dissemination of scientific research documents, whether they are published or not. The documents may come from teaching and research institutions in France or abroad, or from public or private research centers.

L'archive ouverte pluridisciplinaire **HAL**, est destinée au dépôt et à la diffusion de documents scientifiques de niveau recherche, publiés ou non, émanant des établissements d'enseignement et de recherche français ou étrangers, des laboratoires publics ou privés.



Distributed under a Creative Commons Attribution 4.0 International License

## Article

# Cemiplimab for Locally Advanced and Metastatic Cutaneous Squamous-Cell Carcinomas: Real-Life Experience from the French CAREPI Study Group

Candice Hober <sup>1,†,‡</sup>, Lisa Fredeau <sup>2,†,‡</sup>, Anne Pham-Ledard <sup>3,†</sup>, Marouane Boubaya <sup>2,†</sup>, Florian Herms <sup>4,†</sup>, Philippe Celerier <sup>5,†</sup>, François Aubin <sup>6,†</sup>, Nathalie Beneton <sup>7,†</sup>, Monica Dinulescu <sup>8,†</sup>, Arnaud Jannic <sup>9,†</sup>, Nicolas Meyer <sup>10,11,†</sup>, Anne-Bénédicte Duval-Modeste <sup>12,†</sup>, Laure Cesaire <sup>13,†</sup>, Ève-Marie Neidhardt <sup>14,†</sup>, Élodie Archier <sup>15,†</sup>, Brigitte Dréno <sup>16,17,18,†</sup>, Candice Lesage <sup>19,†</sup>, Clémence Berthin <sup>20,†</sup>, Nora Kramkimel <sup>21,†</sup>, Florent Grange <sup>22,23,†</sup>, Julie de Quatrebarbes <sup>24,†</sup>, Pierre-Emmanuel Stoeber <sup>25,26,†</sup>, Nicolas Poulalhon <sup>27,†</sup>, Jean-Philippe Arnault <sup>28,†</sup>, Safia Abed <sup>29,†</sup>, Bertille Bonniaud <sup>30,†</sup>, Sophie Darras <sup>31,†</sup>, Valentine Heidelberger <sup>32,†</sup>, Suzanne Devaux <sup>33,†</sup>, Marie Moncourier <sup>34,†</sup>, Laurent Misery <sup>35,†</sup>, Sandrine Mansard <sup>36,†</sup>, Maxime Etienne <sup>37,†</sup>, Florence Brunet-Possenti <sup>38,†</sup>, Caroline Jacobzone <sup>39,†</sup>, Romain Lesbazeilles <sup>40,41,†</sup>, François Skowron <sup>23,†</sup>, Julia Sanchez <sup>22,†</sup>, Stéphanie Catala <sup>42,†</sup>, Mahtab Samimi <sup>43,44,†</sup>, Youssef Tazi <sup>45,†</sup>, Dominique Spaeth <sup>46,†</sup>, Caroline Gaudy-Marqueste <sup>47,†</sup>, Olivier Collard <sup>48,†</sup>, Raoul Triller <sup>49,†</sup>, Marc Pracht <sup>50,†</sup>, Marc Dumas <sup>51,†</sup>, Lucie Peuvrel <sup>52,†</sup>, Pierre Combe <sup>53,†</sup>, Olivier Lauche <sup>54,†</sup>, Pierre Guillet <sup>55,†</sup>, Yves Reguerre <sup>56,†</sup>, Ingrid Kupfer-Bessagnet <sup>41,†</sup>, David Solub <sup>57,†</sup>, Amélie Schoeffler <sup>58,†</sup>, Christophe Bedane <sup>30,59,†</sup>, Gaëlle Quéreux <sup>16,17,18,†</sup>, Sophie Dalac <sup>30,†</sup>, Laurent Mortier <sup>1,60,†</sup> and Ève Maubec <sup>2,61,62,\*,†</sup>



**Citation:** Hober, C.; Fredeau, L.; Pham-Ledard, A.; Boubaya, M.; Herms, F.; Celerier, P.; Aubin, F.; Beneton, N.; Dinulescu, M.; Jannic, A.; et al. Cemiplimab for Locally Advanced and Metastatic Cutaneous Squamous-Cell Carcinomas: Real-Life Experience from the French CAREPI Study Group. *Cancers* **2021**, *13*, 3547. <https://doi.org/10.3390/cancers13143547>

Academic Editor: Ralf Gutzmer

Received: 6 June 2021

Accepted: 7 July 2021

Published: 15 July 2021

**Publisher's Note:** MDPI stays neutral with regard to jurisdictional claims in published maps and institutional affiliations.



**Copyright:** © 2021 by the authors. Licensee MDPI, Basel, Switzerland. This article is an open access article distributed under the terms and conditions of the Creative Commons Attribution (CC BY) license (<https://creativecommons.org/licenses/by/4.0/>).

- <sup>1</sup> Centre Hospitalier Universitaire (CHU) de Lille, 59037 Lille, France; candice.hober.etu@univ-lille.fr (C.H.); Laurent.MORTIER@CHRU-LILLE.FR (L.M.)
- <sup>2</sup> Hôpital Avicenne, Assistance Publique–Hôpitaux de Paris (APHP), 93000 Bobigny, France; lisa.fredeau@aphp.fr (L.F.); marouane.boubaya@aphp.fr (M.B.)
- <sup>3</sup> CHU de Bordeaux and University of Bordeaux, 33000 Bordeaux, France; anne.pham-ledard@chu-bordeaux.fr
- <sup>4</sup> Hôpital Saint-Louis, APHP, 75010 Paris, France; florian.herms@aphp.fr
- <sup>5</sup> CH Saint-Louis de la Rochelle, 17000 La Rochelle, France; philippe.celerier@ght-atlantique17.fr
- <sup>6</sup> Université de Bourgogne–Franche-Comté and CHU de Besançon, 25000 Besançon, France; faubin@chu-besancon.fr
- <sup>7</sup> CH du Mans, 72037 Le Mans, France; nbeneton@ch-lemans.fr
- <sup>8</sup> Hôpital Pontchaillou, 35000 Rennes, France; monica.dinulescu@chu-rennes.fr
- <sup>9</sup> Hôpital Henri-Mondor, APHP, 94000 Créteil, France; arnaud.jannic@aphp.fr
- <sup>10</sup> Institut Universitaire du Cancer de Toulouse, 31100 Toulouse, France; meyer.n@chu-toulouse.fr
- <sup>11</sup> CHU de Toulouse, 31300 Toulouse, France
- <sup>12</sup> Hôpital Charles-Nicolas, 76038 Rouen, France; ab.duval-modeste@chu-rouen.fr
- <sup>13</sup> Hôpital Côte-de-Nacre, 14000 Caen, France; laure.cesaie@live.fr
- <sup>14</sup> Centre Léon-Bérard, 69008 Lyon, France; eve-marie.neidhardt@lyon.unicancer.fr
- <sup>15</sup> Hôpital Saint-Joseph, 13008 Marseille, France; earchier@hopital-saint-joseph.fr
- <sup>16</sup> CHU de Nantes and Université de Nantes, 44000 Nantes, France; brigitte.dreno@atlanmed.fr (B.D.); gaelle.querieux@chu-nantes.fr (G.Q.)
- <sup>17</sup> Centre d'Investigation Clinique 1413, Institut National de la Santé et de la Recherche Médicale (INSERM), CHU de Nantes, 44000 Nantes, France
- <sup>18</sup> Centre de Recherche en Cancérologie et Immunologie Nantes Angers (CRCINA), Institut National de la Santé et de la Recherche Médicale (INSERM), 44007 Nantes, France
- <sup>19</sup> CHU de Montpellier, 34295 Montpellier, France; candice-lesage@chu-montpellier.fr
- <sup>20</sup> CHU d'Angers, 49100 Angers, France; clemence.berthin@chu-angers.fr
- <sup>21</sup> APHP, Hôpital Cochin, 75014 Paris, France; nora.kramkimel@aphp.fr
- <sup>22</sup> CHU de Reims, 51092 Reims, France; fgrange@ch-valence.fr (F.G.); J.SANCHEZ@ch-stquentin.fr (J.S.)
- <sup>23</sup> CH de Valence, 26000 Valence, France; f.skowron@hopitaux-drome-nord.fr
- <sup>24</sup> CH Annecy Genevois, 74370 Annecy, France; jdequatrebarbes@ch-annecygenevois.fr
- <sup>25</sup> CHU de Nîmes, 30900 Nîmes, France; pierre.stoeber@chu-nimes.fr
- <sup>26</sup> UMR CNRS 5247, Université Montpellier I, 34090 Montpellier, France
- <sup>27</sup> Hôpital Lyon Sud–Hospices Civils de Lyon, 69310 Lyon, France; nicolas.poulalhon@chu-lyon.fr
- <sup>28</sup> CHU Amiens-Picardie, 80000 Amiens, France; arnault.jean-philippe@chu-amiens.fr
- <sup>29</sup> Hôpital d'Instruction des Armées Sainte-Anne, 83000 Toulon, France; safia.abed@intradef.gouv.fr
- <sup>30</sup> CHU F.-Mitterrand Dijon-Bourgogne, 21000 Dijon, France; bertille.bonniaud@chu-dijon.fr (B.B.); christophe.bedane@chu-dijon.fr (C.B.); sophie.dalac@chu-dijon.fr (S.D.)

- 31 CH de Boulogne-sur-Mer, 62200 Boulogne-sur-Mer, France; sec\_dermato@ch-boulogne.fr  
 32 CH Robert-Ballanger, 93600 Aulnay-sous-Bois, France; valentine.heidelberger@aphp.fr  
 33 CH Côte Basque, 64109 Bayonne, France; sdevaux@ch-cotebasque.fr  
 34 CHU de Grenoble-Alpes, 38700 Grenoble, France; mmoncourier@chu-grenoble.fr  
 35 CHU de Brest and University of Bretagne Occidentale, 29200 Brest, France; laurent.misery@chu-brest.fr  
 36 CHU de Clermont-Ferrand, 63100 Clermont-Ferrand, France; smansard@chu-clermontferrand.fr  
 37 CH de Cornouaille, CH Intercommunal de Quimper, 29000 Quimper, France; m.etienne@ch-cornouaille.fr  
 38 APHP, Hôpital Bichat, 75018 Paris, France; florence.brunet-possenti@aphp.fr  
 39 Hôpital du Scorff, 56322 Lorient, France; c.jacobzoneleveque@ghbs.bzh  
 40 CHU de Poitiers, 86021 Poitiers, France; romain.lesbazeilles@ch-niort.fr  
 41 CH de Niort, 79000 Niort, France; ingrid.kupfer@ch-niort.fr  
 42 Clinique Saint-Pierre, 66000 Perpignan, France; stepscatala.2020@gmail.com  
 43 CH Régional Universitaire Trousseau de Tours, 37170 Chambray les Tours, France; mahtab.samimi@univ-tours.fr  
 44 ISP1282 UMR INRA-Université de Tours, 37000 Tours, France  
 45 Clinique Sainte-Anne, 67000 Strasbourg, France; csaler@solcrr.org  
 46 Centre d'Oncologie de Gentilly, 54000 Nancy, France; d.spaeth@ilcgroup.fr  
 47 University of Aix—Marseille and CHU de la Timone, 13005 Marseille, France; caroline.gaudy@ap-hm.fr  
 48 Institut de Cancérologie de la Loire—Lucien-Neuwirth (ICLN), 42270 Saint-Priest-en-Jarez, France; olivier.collard@icloire.fr  
 49 Institut Franco-Britannique, 92300 Levallois-Perret, France; rtriller@orange.fr  
 50 Groupe Hospitalier de St-Malo, 35400 St-Malo, France; m.pracht@rennes.unicancer.fr  
 51 CH René-Dubos, 95300 Pontoise, France; marc.dumaslatte@aphp.fr  
 52 Institut de Cancérologie de l'Ouest, 44800 Saint-Herblain, France; Lucie.Peuvrel@ico.unicancer.fr  
 53 Pôle Santé Léonard-de-Vinci, 37170 Chambray-les-Tours, France; p.combe@cort37.fr  
 54 Clinique Clémentville, 34070 Montpellier, France; olivier.lauche@oncoclem.org  
 55 Hôpital Privé Toulon Hyères Saint-Jean, 83100 Toulon, France; pierre.guillet@clinique-st-jean.fr  
 56 CHU de Saint-Denis, 97400 Saint-Denis de la Réunion, France; yves.reguerre@chu-reunion.fr  
 57 Hôpital Louis Pasteur, 28630 Le Coudray, France; dsolub@ch-chartres.fr  
 58 CH Régional Metz-Thionville, 57100 Metz, France; a.schoeffler@chr-metz-thionville.fr  
 59 CHU de Limoges, 87000 Limoges, France  
 60 INSERM U 1189, University of Lille, 59037 Lille, France  
 61 Campus de Bobigny—Université Sorbonne Paris Nord, 93017 Bobigny, France  
 62 UMR 1124, Campus Saint Germain des Prés, 75006 Paris, France  
 \* Correspondence: eve.maubec@aphp.fr  
 † These authors contributed equally to this study.  
 ‡ These authors belong to French Cutaneous Squamous Cell Carcinoma Study Group.  
 § Present address: CH Niort, 79000 Niort, France.  
 || Present address: Hôpitaux Drôme Nord, 26100 Romans-sur-Isère, France.  
 ¶ Present address: CH Saint-Quentin, 02321 Saint-Quentin, France.

**Simple Summary:** Prognosis of advanced cutaneous squamous-cell carcinoma (CSCC) is poor. Recent clinical trials have shown that immunotherapy achieves significantly improved survival of patients with advanced CSCCs. However, few real-world data are available on treatment patterns and clinical outcomes of patients with advanced CSCCs receiving anti-programmed cell-death protein-1 (PD-1). To approach this issue, we conducted a retrospective study on 245 patients with advanced CSCCs from 58 centers who had been enrolled in an early-access program; 240 received cemiplimab. Our objectives were to evaluate, in the real-life setting, best overall response rate, progression-free survival, overall survival and safety. Results demonstrated cemiplimab efficacy in patients with advanced CSCCs, regardless of immune status. Patients with good Eastern Cooperative Oncology Group performance status benefited more from cemiplimab. The safety profile was acceptable.

**Abstract:** Although cemiplimab has been approved for locally advanced (la) and metastatic (m) cutaneous squamous-cell carcinomas (CSCCs), its real-life value has not yet been demonstrated. An early-access program enrolled patients with la/mCSCCs to receive cemiplimab. Endpoints were best overall response rate (BOR), progression-free survival (PFS), overall survival (OS), duration of response (DOR) and safety. The 245 patients (mean age 77 years, 73% male, 49% prior systemic treatment, 24% immunocompromised, 27% Eastern Cooperative Oncology Group performance status (PS)  $\geq 2$ ) had laCSCCs (35%) or mCSCCs (65%). For the 240 recipients of  $\geq 1$  infusion(s), the BOR was 50.4% (complete, 21%; partial, 29%). With median follow-up at 12.6 months, median PFS

was 7.9 months, and median OS and DOR were not reached. One-year OS was 73% versus 36%, respectively, for patients with PS < 2 versus  $\geq 2$ . Multivariate analysis retained PS  $\geq 2$  as being associated during the first 6 months with PFS and OS. Head-and-neck location was associated with longer PFS. Immune status had no impact. Severe treatment-related adverse events occurred in 9% of the patients, including one death from toxic epidermal necrolysis. Cemiplimab real-life safety and efficacy support its use for la/mCSCCs. Patients with PS  $\geq 2$  benefited less from cemiplimab, but it might represent an option for immunocompromised patients.

**Keywords:** PD-1-blocking antibody; cemiplimab; cutaneous squamous cell carcinoma; real-life setting; immunocompromised; chronic dermatosis

## 1. Introduction

Cutaneous squamous-cell carcinoma (CSCC) is the second most common skin cancer after basal-cell carcinoma [1]. In Europe, the reported age-standardized CSCC incidence ranges from 15 to 77 per 100,000 individuals per year, predominantly occurring in males [2,3]. The incidence is constantly increasing, probably because of early CSCC resection, population aging and changing UV-exposure habits [4]. The CSCC risk is heightened for immunocompromised patients, being about 100-times higher after organ transplantation [5–9], and for those CSCC oncogenic human papillomavirus-positive, or with chronic dermatitis, exposure to arsenic or ionizing radiation, or genodermatosis (e.g., dystrophic epidermolysis bullosa, xeroderma pigmentosum, albinism and Muir–Torre syndrome) [10–15]. At an early stage, CSCC prognosis is excellent, with 90% 10-year survival [16]. However, ~5% of the patients experience local recurrences, ~4% of them develop regional disease and outcomes are fatal for ~2% [16–22]. According to American data [23], the CSCC mortality rate is of the same order of magnitude as that of melanoma. The 5-year overall survival (OS) rate of patients with resectable, regional CSCCs was 50–60% [18,19]. The prognosis becomes more uncertain for locally advanced or metastatic disease, with either regional or distant metastases.

Since 2018, anti-programmed cell-death protein-1 (PD-1) monoclonal antibodies have emerged as first-line treatments for the management of unresectable, locally advanced or metastatic CSCCs. Cemiplimab was the first immunotherapy approved by the Food and Drug Administration and the European Medicines Agency [24], followed by pembrolizumab, in the United States, for patients who are not candidates for curative radiotherapy or surgery [25]. Immunotherapies have demonstrated anti-tumor activity with response rates exceeding 40% and acceptable safety profiles [24–27].

In France, an early-access program made cemiplimab available to patients with locally advanced or metastatic CSCCs during the time between completion of enrollment in cemiplimab clinical trials and its regulatory approval. This retrospective, multicenter CAREPI trial aimed to evaluate cemiplimab efficacy and safety in the real-life setting of those early-access patients. Our results confirmed cemiplimab efficacy in real life and identified clinical characteristics of those patients associated with progression-free survival (PFS) and OS.

## 2. Materials and Methods

Patients eligible for the early-access program (August 2018 to October 2019) were adults with locally advanced or metastatic CSCCs not amenable to surgery. Exclusion criteria were active autoimmune diseases or infections, uncontrolled brain metastases, pregnancy or breastfeeding. Patients received intravenous cemiplimab infusions (3 mg/kg every 2 weeks) until death from any cause, unacceptable toxicity, or patient's or physician's decision. Investigators were asked to complete a standardized case-report form for each patient included in the early-access program.

This retrospective study was approved by the local Avicenne Hospital Ethics Committee (CLEA-2019-75). The national database has been declared to the French data-protection agency (CNIL approval number 2215607). In compliance with French law, consent regarding non-opposition to collect and use the data was obtained from each patient.

The primary endpoint was the best overall response rate (BOR); secondary endpoints included PFS, OS, duration of response (DOR) and safety. Standard-of-care tumor assessments were carried out at the treating facility without central review. Adverse events (AEs) were graded according to the Common Terminology Criteria for Adverse Events version 5. Efficacy and safety were assessed for all patients who received at least one cemiplimab infusion.

Patient characteristics are expressed as numbers (percentages) for discrete variables, and mean  $\pm$  standard deviation or median (range) for continuous variables. Data cutoff was 19 June 2020. Median follow-up was estimated using the Kaplan–Meier reverse method. OS and PFS were defined, respectively, as the times from the first cemiplimab dose to death from any cause and until disease progression or death from any cause, whichever occurred first. DOR was defined as the time from BOR to first documentation of disease progression. OS, PFS, duration of cemiplimab treatment, and DOR were censored at the date of last information update, estimated using the Kaplan–Meier method and expressed as median (95% confidence intervals (CIs)). Prognostic factors associated with PFS and OS were identified with log-rank tests. A multivariate Cox proportional hazards regression model with a step function was used because Eastern Cooperative Oncology Group performance status (PS) violated the proportional hazards assumption. PS was determined twice ( $<$  or  $\geq 6$  months). The cumulative incidence of relapses was estimated according to type of response using competing-risk analyses and were compared with Gray's test. All tests were two-sided, with significance set at  $p < 0.05$ . Analyses were computed with R statistical software V.4.0.3 (R Foundation for Statistical Computing, Vienna, Austria).

### 3. Results

#### 3.1. Patients

All information concerning 245 patients, from 58 French centers, was collected. Five patients died before the first infusion and were not analyzed for efficacy and safety. Baseline (pre-cemiplimab) patient characteristics are reported for the 245 intent-to-treat patients in Table 1. Their mean age was 77 years, 73% were male, 27% had PS  $\geq 2$  and 24% were immunocompromised. Among the 59 immunocompromised, 64% had blood disorders, including 34% with chronic lymphocytic leukemia. Among the intent-to-treat population, CSCCs were 35% localized, 39% regional disease and 26% had distant metastases; 11% had chronic dermatitis and 3% had cutaneous ulcers. Two-thirds of CSCCs were located on the head and neck. Histopathological examination revealed 23% were poorly differentiated and 11% exhibited perineural invasion.

Regarding previous treatments (see Table S1), 60% of intent-to-treat patients had received radiotherapy and 79% had undergone surgical excision. Moreover, about half had received systemic treatment, which was most frequently (38%) anti-epidermal growth factor receptor (EGFR) plus chemotherapy. Three-quarters received one line of systemic therapy before cemiplimab.

Cemiplimab administration lasted a median of 5.5 (95% CI 4.6–8.8) months, for a median of 10 (1–40) infusions for each per-protocol patient, with 29% (95% CI 23–36) of the patients still being treated beyond 12 months.

**Table 1.** Baseline characteristics of all 245 intent-to-treat CSCC patients.

Characteristic	Value
Age, years	77.1 ± 13.3
Male sex	178 (73)
ECOG performance status	
0	60 (25)
1	118 (48)
≥2	66 (27)
Unknown	1 (0.4)
Immunocompromised	59 (24)
Human immunodeficiency virus-positive	8 (3)
Organ transplant	7 (3)
Chronic lymphocytic leukemia	20 (8)
Other blood disorders <sup>a</sup>	18 (7)
Immunosuppressive drugs	6 (3)
Genodermatosis	8 (3)
Inherited epidermolysis bullosa	2 (0.8)
Muir–Torre syndrome	2 (0.8)
Xeroderma pigmentosum	1 (0.4)
Ichthyosis	2 (0.8)
Epidermodysplasia verruciformis	1 (0.4)
Chronic dermatitis	28 (11)
Burns	4 (1.6)
Scars	2 (0.8)
Lichen planus	2 (0.8)
Chronic wounds	9 (4)
Warts/condylomas	4 (1.6)
Arsenic keratosis	2 (0.8)
Radiodermatitis	3 (1.2)
Others <sup>b</sup>	2 (0.8)
≥3 primary CSCCs	80 (33)
Primary CSCC site	
Head-and-neck <sup>c</sup>	164 (70)
Trunk	9 (4)
Anorectal and/or genital	12 (5)
Arm or leg	58 (24)
Unknown	3 (1.2)
Histopathological characteristics	
Poor differentiation	57 (23)
Perineural invasion	26 (11)
Both	9 (4)
None	69 (28)
Unknown	84 (34)
CSCC stage	
Localized	85 (35)
Regional	95 (39)
Distant metastases	64 (26)
Unknown	1 (0.4)

Results are expressed as mean ± standard deviation or number (%). ECOG, Eastern Cooperative Oncology Group; CSCC, cutaneous squamous-cell carcinoma. <sup>a</sup> Other blood disorders included: polycythemia vera, four; Waldenström's macroglobulinemia, three; two each: mantle-cell lymphoma or myelodysplastic syndrome; one each: large B-cell lymphoma, cutaneous T-cell lymphoma, essential thrombocythemia, multiple myeloma associated with amyloid light-chain amyloidosis, IgM monoclonal gammopathy, thrombopenia of unspecified cause or idiopathic CD4 lymphocytopenia. <sup>b</sup> Carcinomas due to phototherapy or erosive pustular dermatosis of the scalp. <sup>c</sup> Including two CSCCs located on the lips.

### 3.2. Efficacy Evaluation

Responses of the 240 assessable patients are detailed in Table 2: 21% complete responses and 29% partial responses, for a BOR of 50% (95% CI 44–57). Only 64% of responses were confirmed. The BORs did not differ according to immunocompromised versus immunocompetent status (50% versus 51%, respectively), with prior systemic treatment



versus without (51% versus 50%, respectively;  $p = 0.9$ ), or according to local, regional or distant disease (48%, 56% or 46%, respectively;  $p = 0.41$ ). However, the BORs were lower for patients with PS  $\geq 2$  versus  $<2$  (37% versus 56%, respectively;  $p = 0.01$ ). Patients with chronic dermatitis tended to have poorer responses than those without (32% versus 52%, respectively;  $p = 0.06$ ). The disease-control rate was 59.6% (95% CI 53.1–65.8).

**Table 2.** Best overall responses ( $n = 240$ ) as assessed by investigators.

Outcome	<i>n</i> (%)
Complete response	51 (21)
Confirmed	36 (15)
Unconfirmed	15 (6)
Partial response	70 (29)
Confirmed	41 (17)
Unconfirmed	29 (12)
Stable disease	22 (9)
Progressive disease	84 (35)
Not assessable	13 (5)
Best overall response rate, <i>n</i> (%) [95% CI]	121 (50.4 [43.9–56.9])
Confirmed	77 (32)
Unconfirmed	44 (18)
Best overall disease control rate, <i>n</i> (%) [95% CI]	143 (59.6 [53.1–65.8])

Results are expressed as number (%), unless stated otherwise.

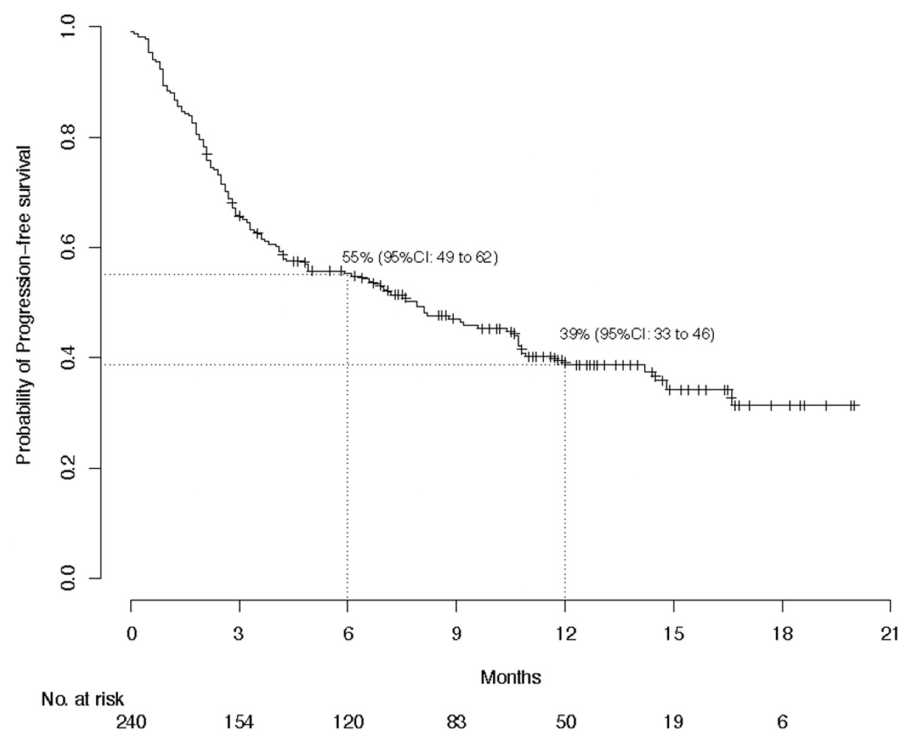
The median time to complete response was 5.9 (range 1.7–13.6) months. Complete responders' median treatment duration was 11.3 months (range 13–516 days), versus 7.5 months (range 43–595 days) for partial responders. The reasons for cemiplimab discontinuation were not fully available for these patients. Among the 51 complete responders, only three (6%) progressed during follow-up: two progressed on cemiplimab after 318 or 471 days of treatment and one progressed 3 months after stopping cemiplimab, which had been administered for 241 days (see Figure S1). A median of 61 days of follow-up were available for 27 (53%) complete responders after cemiplimab discontinuation: only one of them relapsed. At 1 year, relapses were significantly more frequent for partial responders (53%) than complete responders (9%) ( $p = 0.007$ ).

With global median follow-up at 12.6 months, median PFS lasted 7.9 (95% CI, 4.9–10.7) months and 1-year PFS was 38.7%; median global OS was not reached and the 1-year OS was 63.1%; and median global DOR was not reached and the 1-year DOR rate was 62.9% (Figures 1–3). The 1-year PFS and OS rates did not differ according to immune status or previous systemic treatment status ( $p > 0.21$ ). However, their durations were significantly shorter for patients with PS  $\geq 2$  versus PS  $< 2$ , with respective estimated percentages (95% CI) of 25.1% (15.0–41.8%) and 43.5% (36.3–52.3%) ( $p < 0.0001$ ) for PFS, and 36% (25–52%) and 73% (66–81%) ( $p < 0.0001$ ) for OS. The highly significant impact of PS  $\geq 2$  on PFS and OS was confirmed during the first 6 months, after adjustment for age, sex, chronic dermatitis, primary CSCC site and disease stage (Table 3). After 6 months, PS was no longer associated with PFS or OS. Primary head-and-neck CSCC was also associated with a better PFS.

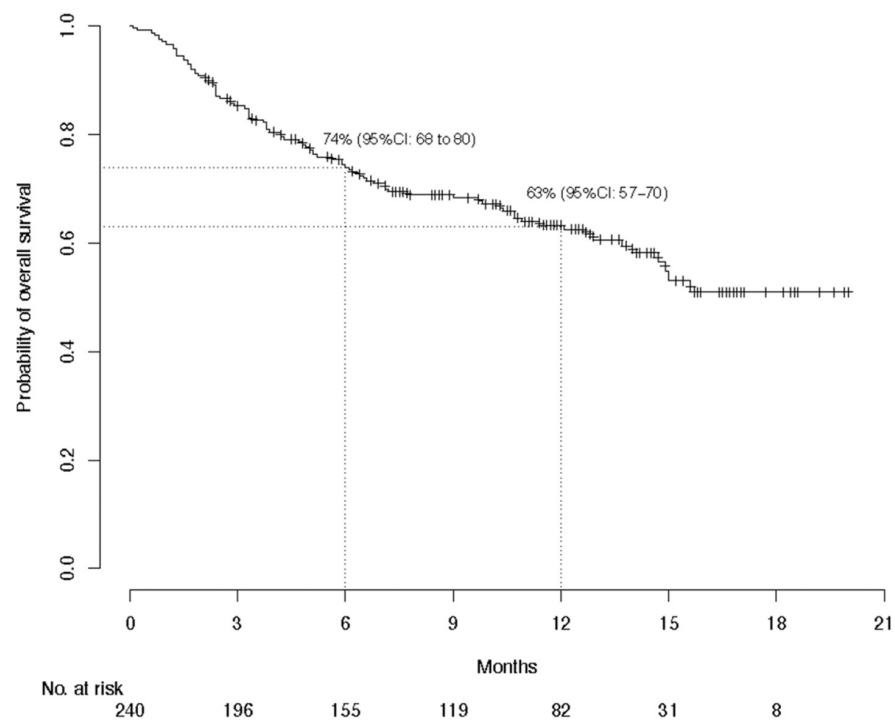
### 3.3. Adverse Events

One-third of the patients experienced treatment-related AEs (TRAEs; Table 4), with the most common being (in decreasing order): fatigue, arthralgias/myalgias, hepatic disorders, diarrhea and pruritus. They led to treatment discontinuation for 16 (7%) patients. Twenty-two patients experienced at least one grade-3 or higher TRAE, as detailed in Table 5. They were mostly hepatic disorders and fatigue, but also renal impairment, arthralgias/myalgias, and two kidney-transplant rejections. The death of one patient from toxic epidermal necrolysis (Lyell's syndrome) was attributed to cemiplimab. A median of 6 (range 0–70) weeks separated cemiplimab onset and the first AE. The response rates

for patients with TRAEs (54.7%) and those without (47.3%) did not differ significantly ( $p = 0.45$ ).

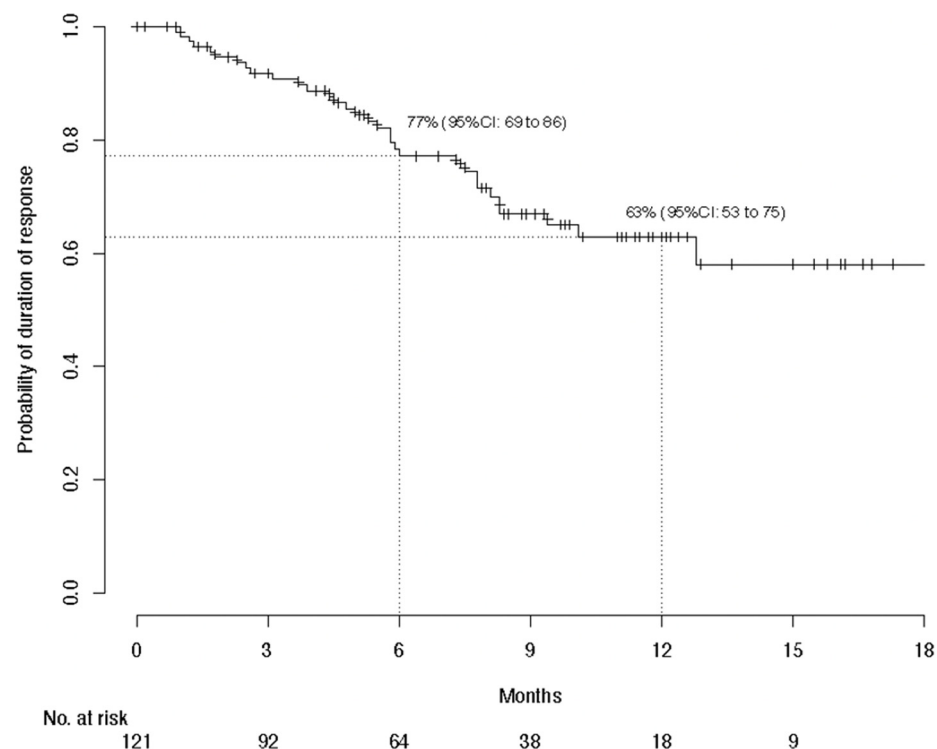


**Figure 1.** Kaplan–Meier estimations of the 6-month and 1-year probabilities of progression-free survival for the per-protocol population ( $n = 240$ ).



**Figure 2.** Kaplan–Meier estimations of the 6-month and 1-year probabilities of overall survival for the per-protocol population ( $n = 240$ ).





**Figure 3.** Kaplan–Meier estimations of the 6-month and 1-year probabilities of duration of response after cemiplimab treatment for the per-protocol population ( $n = 240$ ).

**Table 3.** Factors associated with progression-free survival or overall survival in univariate and multivariate analyses.

Factor	Univariate		Multivariate	
	HR (95% CI)	<i>p</i>	HR (95% CI)	<i>p</i>
<b>Progression-free survival</b>				
Age	1.00 (0.98–1.01)	0.62	1.00 (0.98–1.01)	0.63
Male sex	0.79 (0.55–1.15)	0.22	0.91 (0.61–1.37)	0.66
Immunocompromised	1.03 (0.7–1.51)	0.89	1.15 (0.76–1.76)	0.5
ECOG PS $\geq 2$				
$\leq 6$ months	2.3 (1.53–3.44)	<0.0001	2.33 (1.52–3.55)	0.0001
6 months	0.88 (0.31–2.51)	0.81	0.85 (0.3–2.46)	0.77
Chronic dermatitis	1.67 (1.02–2.71)	0.04	1.07 (0.61–1.87)	0.8
Primary head-or-neck CSCC	0.58 (0.41–0.81)	0.0002	0.52 (0.34–0.79)	0.0025
Localized disease	1.16 (0.82–1.64)	0.41	0.72 (0.49–1.05)	0.09
Previous systemic treatment	0.88 (0.62–1.23)	0.44	1.03 (0.71–1.50)	0.88
<b>Overall survival</b>				
Age	1.00 (0.99–1.02)	0.81	0.99 (0.98–1.01)	0.46
Male sex	0.9 (0.56–1.44)	0.66	1.01 (0.61–1.67)	0.97
Immunocompromised	0.82 (0.49–1.35)	0.43	0.91 (0.53–1.56)	0.72
ECOG PS $\geq 2$				
$\leq 6$ months	4.39 (2.62–7.33)	<0.0001	4.56 (2.64–7.85)	0.0001
>6 months	1.61 (0.61–4.27)	0.34	1.69 (0.63–4.52)	0.3
Chronic dermatitis	0.98 (0.49–1.95)	0.95	0.7 (0.32–1.51)	0.36
Primary head-or-neck CSCC	0.76 (0.49–1.18)	0.22	0.67 (0.4–1.13)	0.13
Localized disease	1.02 (0.66–1.58)	0.94	0.74 (0.45–1.2)	0.22
Previous systemic treatment	0.76 (0.5–1.17)	0.21	1.09 (0.68–1.76)	0.72

ECOG PS, Eastern Cooperative Oncology Group performance status; CSCC, cutaneous squamous-cell carcinoma.

**Table 4.** Each cemiplimab-related adverse event occurred in at least two of the 240 treated patients.

Adverse Event	Any Grade	Grade $\geq 3$
Any	75 (31)	22 (9)
Led to cemiplimab discontinuation	16 (7)	12 (5)
Fatigue	21 (9)	4 (2)
Arthralgias/myalgias	17 (7)	2 (1)
Cholestasis/cytolysis/hepatitis	10 (4)	5 (2)
Diarrhea	7 (3)	0
Pruritus	6 (3)	0
Rash	5 (2)	0
Hypothyroidism	5 (2)	0
Renal failure	5 (2)	3 (1)
Hyperthyroidism	4 (2)	0
Lymphopenia	3 (1)	0
Decreased appetite	3 (1)	1 (0.4)
Peripheral neuropathy	3 (1)	0
Anemia	2 (1)	0
Neutropenia	2 (1)	0
Myocarditis	2 (1)	1 (0.4)
Corticotrophic insufficiency	2 (1)	0
Colitis	2 (1)	2 (1)
Vomiting	2 (1)	1 (0.4)
Loss of weight	2 (1)	0
Balance disorder	2 (1)	0
Transplant rejection	2 (1)	2 (1)

Results are expressed as number (%).

**Table 5.** Serious cemiplimab-related adverse events in the 240 treated patients.

Adverse Event	Severity Grade			
	Any	Grade 3	Grade 4	Grade 5
Cholestasis/cytolysis/hepatitis	5 (2)	3	2	0
Fatigue	4 (2)	4	0	0
Renal impairment	3 (1)	2	1	0
Arthralgias/myalgias	2 (1)	2	0	0
Colitis	2 (1)	2	0	0
Transplant rejection	2 (1)	1	1	0
Decreased appetite	1 (0.4)	1	0	0
Myocarditis	1 (0.4)	1	0	0
Vomiting	1 (0.4)	1	0	0
Acute pancreatitis	1 (0.4)	1	0	0
Interstitial lung disease	1 (0.4)	1	0	0
Drug reaction with eosinophilia and systemic symptoms	1 (0.4)	0	1	0
Toxic epidermal necrolysis	1 (0.4)	0	0	1

Results are expressed as number (%) or number.

#### 4. Discussion

This retrospective study on 240 CSCC patients confirmed cemiplimab efficacy in the real-life setting as a curative treatment for unresectable, locally advanced or metastatic disease. Patients in this series share characteristics with the 193 patients enrolled in the phase II trial evaluating cemiplimab that led to its approval [24,26,28,29]: predominantly men, older age, 29% poorly differentiated tumors [26], and mostly head-and-neck primary locations. Unlike those study participants, our population included 24% immunocompromised patients, with 16% having blood disorders (i.e., chronic lymphocytic leukemia and other hemopathies), and 27% with PS  $\geq 2$ . Notably, in our series, 49% had received systemic treatment before starting cemiplimab, versus 34% in the phase II trial [28], 3% had a genodermatosis and 11% had an underlying chronic dermatitis, most frequently chronic

wounds. The BOR herein was 50%, including 21% complete responses, which is of the same order of magnitude as in other trials evaluating anti-PD-1 [24–29].

Our results suggest that immunocompromised patients, including those with blood disorders, respond and survive as well as immunocompetent patients, meaning they apparently benefit from anti-PD-1, despite usually being excluded from trials. However, management of these patients, particularly transplant recipients, must be extremely attentive so as to avoid rejection, as highlighted by the two kidney-transplant rejections observed herein; nonetheless, they should be included in trials. Indeed, anti-PD-1 increased the risk of graft rejection and, when rejection occurred, mortality was recently estimated at 36%, with a high risk for liver-transplant recipients [30]. An ongoing trial is evaluating the safety and efficacy of cemiplimab with everolimus/sirolimus plus prednisone or without as treatment for advanced CSCCs in kidney transplantees (NCT04339062).

Our findings also support that systemic treatment-naïve patients responded as well as pretreated patients. They also showed that frail patients with poor PS responded less well. However, because more than one-third of them responded to cemiplimab, anti-PD-1 should remain the first-line systemic treatment of choice. It is now critical to identify factors predictive of response in these frail patients. Our observations indicate that patients with underlying chronic dermatitis might respond less well to cemiplimab than patients without, but that outcome remains to be confirmed by a larger study.

Remarkably, our complete responders rarely relapsed (6%), even after stopping cemiplimab. Notably, although disease progression after an objective response was observed in 21% of responders, the risk of relapse was markedly higher for partial responders than complete responders, as previously reported for melanoma patients [31,32]. Determining responders' factors predictive of relapse and optimal treatment duration for partial responders would contribute greatly to improving their management.

Although direct comparison is impossible, for our entire population, 1-year PFS (38.7%) and OS (63.1%) were substantially lower than in Migden et al.'s phase II study [24]. Indeed, their patients' 1-year PFS and OS ranged between 47% and 58%, and 76% and 93%, respectively, according to the different patient subgroups [28,33]. One factor that could explain this difference would be our overestimation of the response rate, attributable to either the high frequency of unconfirmed responses or the lack of independent central review. Indeed, in Migden et al.'s phase II study [26], the response rate was overestimated by investigators (53%) compared to blinded independent central reviewers (44%), as recently demonstrated by the analysis of 20 trials that had central and investigators' BOR assessments available [34]. However, our series' BOR was very close to the investigators' estimated response rate in Migden et al.'s trial [26].

Another hypothesis might be that our lower-than-expected PFS and OS might reflect our patients' characteristics, i.e., 27% with PS  $\geq 2$ , whose 1-year OS at 36% was significantly shorter, as reported for lung cancer [35], whereas that OS rate for patients with PS  $< 2$  reached the lower threshold of the OS estimated in the cemiplimab phase II CSCC trial [28,33]. Our best model for OS included only PS, while our best model for PFS included PS and primary head-and-neck. Although it is difficult to attribute a protective effect to head-and-neck CSCCs, it can be hypothesized that the tumor mutational burden would be increased in CSCCs located at that site, a chronically sun-exposed area, compared to other cutaneous areas not chronically sun-exposed. Because high tumor mutational burden predicts prolonged survival in patients receiving anti PD-1 [36], such a higher burden might help explain the association between longer PFS and head-and-neck site retained by our multivariate analysis. Further molecular studies are needed to confirm this hypothesis. Notably, PFS and OS did not differ according to CSCC stage, prior systemic treatment status or immune status, thereby suggesting that it would be of interest to enroll immunocompromised patients in trials evaluating anti-PD-1.

The cemiplimab-safety profile for our series was comparable with that in other studies on PD-1-blocking agents to treat CSCC [24,26,37]. Most AEs were manageable, except for 16 (7% of the patients) that necessitated cemiplimab discontinuation. One cemiplimab-

related death from toxic epidermal necrolysis occurred. About 20 Stevens–Johnson syndrome/toxic epidermal necrolysis cases have been reported with other inhibitors of PD-1 or its ligand [38–55]. Toxic epidermal necrolysis is responsible for high mortality [56]. According to the American Society of Clinical Oncology guidelines, cyclosporine or intravenous immunoglobulins combined with corticosteroids should be initiated when toxic epidermal necrolysis is diagnosed [57]. Indeed, with the increasing use of immune-checkpoint inhibitors, physicians should be aware of this very rare AE. Twenty-two (9%) of our patients developed severe grade-3 or -4 TRAEs, a rate consistent with previous studies on PD-1–blocking agents [24–26,50]. One early-onset cemiplimab-induced grade-4 drug reaction with eosinophilia and systemic symptoms with a favorable outcome occurred in a 76-year-old woman. Considering these frail patients, the safety profile seems acceptable.

Limitations of this study are its retrospective design, the lack of central assessment of disease response, the too short follow-up that precluded accurate determinations of OS, DOR, and the long-term outcomes of responders after stopping anti-PD-1. Indeed, longer follow-up would be helpful. Moreover, PFS results may not be very accurate because assessments were made according to standard of care and may have been performed at different timepoints.

## 5. Conclusions

The results of this retrospective study confirm cemiplimab’s strong anti-tumor activity and manageable safety, meaning it should be offered to patients with unresectable, locally advanced or metastatic CSCCs. Our analysis of the characteristics of CSCC patients who received cemiplimab in the real-life setting demonstrated the poor prognosis associated with PS  $\geq 2$ . The association between head-and-neck involvement and longer PFS requires additional molecular prognostic studies to determine whether or not that site has a protective effect on PFS for patients with locally advanced or metastatic disease. Moreover, the results of this analysis indicate that cemiplimab might be beneficial for immunocompromised patients.

**Supplementary Materials:** The following are available online at <https://www.mdpi.com/article/10.3390/cancers13143547/s1>, Figure S1. The responses for each cemiplimab-recipient and the times at which they and other events occurred are reported. Table S1. Therapies given to the 245 intent-to-treat patients before cemiplimab.

**Author Contributions:** Conceptualization, S.D. (Sophie Dalac), L.M. (Laurent Mortier) and È.M.; formal analysis, M.B. and È.M.; investigation, C.H., L.F. and È.M.; methodology, M.B.; project administration, È.M.; resources, C.H., L.F., A.P.-L., F.H., P.C. (Philippe Celerier), F.A., N.B., M.D. (Monica Dinulescu), A.J., N.M., A.-B.D.-M., L.C., È.-M.N., É.A., B.D., C.L., C.B. (Clémence Berthin), N.K., F.G., J.d.Q., P.-E.S., N.P., J.-P.A., S.A., B.B., S.D. (Sophie Darras), V.H., S.D. (Suzanne Devaux), M.M., L.M. (Laurent Misery), S.M., M.E., F.B.-P., C.J., R.L., F.S., J.S., S.C., M.S., Y.T., D.S. (Dominique Spaeth), C.G.-M., O.C., R.T., M.P., M.D. (Marc Dumas), L.P., P.C. (Pierre Combe), O.L., P.G., Y.R., I.K.-B., D.S. (David Solub), A.S., C.B. (Christophe Bedane) and G.Q.; software, M.B.; supervision, È.M.; visualization, C.H., L.F. and È.M.; writing—review and editing, C.H., L.F., A.P.-L., M.B., F.H., P.C. (Philippe Celerier), F.A., N.B., M.D. (Monica Dinulescu), A.J., N.M., A.-B.D.-M., L.C., È.-M.N., É.A., B.D., C.L., C.B. (Clémence Berthin), N.K., F.G., J.d.Q., P.-E.S., N.P., J.-P.A., S.A., B.B., S.D. (Sophie Darras), V.H., S.D. (Suzanne Devaux), M.M., L.M. (Laurent Misery), S.M., M.E., F.B.-P., C.J., R.L., F.S., J.S., S.C., M.S., Y.T., D.S. (Dominique Spaeth), C.G.-M., O.C., R.T., M.P., M.D. (Marc Dumas), L.P., P.C. (Pierre Combe), O.L., P.G., Y.R., I.K.-B., D.S. (David Solub), A.S., C.B. (Christophe Bedane), G.Q., S.D. (Sophie Dalac), L.M. (Laurent Mortier) and È.M. All authors have read and agreed to the published version of the manuscript.

**Funding:** This research received no external funding.

**Institutional Review Board Statement:** The study was conducted in accordance with the guidelines of the Declaration of Helsinki, and approved by the Ethics Committee of AVICENNE HOSPITAL (protocol code CLEA-2019-75; date of approval 27 September 2019). The national database has been declared to the French data-protection agency (CNIL approval number 2215607).

**Informed Consent Statement:** In compliance with French law, consent regarding non-opposition to collect and use the data was obtained from each patient.

**Data Availability Statement:** Relevant data supporting the findings of this study are available within the article and Supplementary Materials and are available from the authors upon reasonable request.

**Acknowledgments:** The authors would like to thank Elisa Funck-Brentano from Hôpital Ambroise Paré, AP-HP, Boulogne, who included 3 cases in this study, for her contribution to this study. They would like to thank all members of the Groupe Français de Cancérologie and of the French Cutaneous Squamous Cell Carcinoma Study Group (CAREPI). They would like to thank other physicians involved in the study and the patients who participated in this early access program. Editorial assistance was provided by Janet Jacobson. The authors thank Margot Denis for technical assistance.

**Conflicts of Interest:** M. Samimi received fees from Janssen Cilag for speaking at an educational meeting and has received reimbursement for travel and accommodation expenses for attending national and international medical congresses from Abbvie, Amgen SAS, Bristol Myers Squibb, Celgene SAS, Galderma International, Lilly France SAS, MSD France. N. Meyer: Investigator and/or consultant and/or speaker and/or research grants from BMS, MSD, Roche, Novartis, Pierre Fabre, Merck, Sanofi, Sun Pharma. J.-P. Arnault: Novartis (boards), speaker (BMS and MSD). E. Maubec: Investigator and/or consultant and/or research grants from BMS, MSD, Novartis, Pierre Fabre, Sanofi. F. Herms reports receiving fees for consulting, advisory boards and travel accommodations for attending congresses from Sanofi et SUN Pharma. S. Mansard reports participation on boards and having received support for travel accommodations for attending congresses from Sanofi, Novartis, Pierre Fabre, MSD, BMS. G. Quereux reports receiving fees for consulting, advisory boards and being an investigator from Sanofi, Novartis, Pierre Fabre, MSD, Roche and BMS.

## References

1. Rogers, H.W.; Weinstock, M.A.; Feldman, S.R.; Coldiron, B.M. Incidence estimate of nonmelanoma skin cancer (keratinocyte carcinomas) in the U.S. population, 2012. *JAMA Dermatol.* **2015**, *151*, 1081–1086. [[CrossRef](#)] [[PubMed](#)]
2. Stratigos, A.J.; Garbe, C.; Dessinioti, C.; Lebbe, C.; Bataille, V.; Bastholt, L.; Dréno, B.; Fargnoli, M.C.; Forsea, A.M.; Frenard, C.; et al. European interdisciplinary guideline on invasive squamous cell carcinoma of the skin: Part 1. epidemiology, diagnostics and prevention. *Eur. J. Cancer* **2020**, *128*, 60–82. [[CrossRef](#)] [[PubMed](#)]
3. Maubec, E. Update of the management of cutaneous squamous-cell carcinoma. *Acta Dermatol. Venereol.* **2020**, *100*, adv00143. [[CrossRef](#)] [[PubMed](#)]
4. Christensen, G.B.; Ingvar, C.; Hartman, L.W.; Olsson, H.; Nielsen, K. Sunbed use increases cutaneous squamous cell carcinoma risk in women: A large-scale, prospective study in Sweden. *Acta Derm. Venereol.* **2019**, *99*, 878–883. [[CrossRef](#)] [[PubMed](#)]
5. Jensen, P.; Hansen, S.; Møller, B.; Leivestad, T.; Pfeffer, P.; Geiran, O.; Fauchald, P.; Simonsen, S. Skin cancer in kidney and heart transplant recipients and different long-term immunosuppressive therapy regimens. *J. Am. Acad. Dermatol.* **1999**, *40*, 177–186. [[CrossRef](#)]
6. Garrett, G.L.; Blanc, P.D.; Boscardin, J.; Lloyd, A.A.; Ahmed, R.L.; Anthony, T.; Bibee, K.; Breithaupt, A.; Cannon, J.; Chen, A.; et al. Incidence of and risk factors for skin cancer in organ transplant recipients in the United States. *JAMA Dermatol.* **2017**, *153*, 296–303. [[CrossRef](#)]
7. Rizvi, S.M.H.; Aagnes, B.; Holdaas, H.; Gude, E.; Boberg, K.M.; Bjørtuft, Ø.; Helsing, P.; Leivestad, T.; Møller, B.; Gjersvik, P. Long-term change in the risk of skin cancer after organ transplantation: A population-based nationwide cohort study. *JAMA Dermatol.* **2017**, *153*, 1270–1277. [[CrossRef](#)]
8. Lindelöf, B.; Sigurgeirsson, B.; Gäbel, H.; Stern, R.S. Incidence of skin cancer in 5356 patients following organ transplantation. *Br. J. Dermatol.* **2000**, *143*, 513–519.
9. Grulich, A.E.; van Leeuwen, M.T.; Falster, M.O.; Vajdic, C.M. Incidence of cancers in people with HIV/AIDS compared with immunosuppressed transplant recipients: A meta-analysis. *Lancet* **2007**, *370*, 59–67. [[CrossRef](#)]
10. Faust, H.; Andersson, K.; Luostarinen, T.; Gislefoss, R.E.; Dillner, J. Cutaneous human papillomaviruses and squamous cell carcinoma of the skin: Nested case-control study. *Cancer Epidemiol. Biomark. Prev.* **2016**, *25*, 721–724. [[CrossRef](#)]
11. Torchia, D.; Massi, D.; Caproni, M.; Fabbri, P. Multiple cutaneous precanceroses and carcinomas from combined iatrogenic/professional exposure to arsenic. *Int. J. Dermatol.* **2008**, *47*, 592–593. [[CrossRef](#)] [[PubMed](#)]
12. Reed, W.B.; Collette, J., Jr.; Francis, M.J.O.; Zachariae, H.; Mohs, F.; Sher, M.A.; Sneddon, I.B. Epidermolysis bullosa dystrophica with epidermal neoplasms. *Arch. Dermatol.* **1974**, *110*, 894–902. [[CrossRef](#)] [[PubMed](#)]
13. Anderson, D.E. An inherited form of large bowel cancer: Muir’s syndrome. *Cancer* **1980**, *45*, 1103–1107. [[CrossRef](#)]
14. King, R.A.; Creel, D.; Cervenka, J.; Okoro, A.N.; Witkop, C.J. Albinism in Nigeria with delineation of new recessive oculocutaneous type. *Clin. Genet.* **1980**, *17*, 259–270. [[CrossRef](#)]
15. Kraemer, K.H.; Lee, M.M.; Scotto, J. Xeroderma pigmentosum. Cutaneous, ocular, and neurologic abnormalities in 830 published cases. *Arch. Dermatol.* **1987**, *123*, 241–250. [[CrossRef](#)]



16. Karia, P.S.; Jambusaria-Pahlajani, A.; Harrington, D.P.; Murphy, G.F.; Qureshi, A.A.; Schmuls, C.D. Evaluation of American Joint Committee on Cancer, International Union Against Cancer, and Brigham and Women's Hospital tumor staging for cutaneous squamous cell carcinoma. *J. Clin. Oncol.* **2014**, *32*, 327–334. [\[CrossRef\]](#)
17. Leibovitch, I.; Huilgol, S.C.; Selva, D.; Hill, D.; Richards, S.; Paver, R. Cutaneous squamous cell carcinoma treated with Mohs micrographic surgery in Australia, I. Experience over 10 years. *J. Am. Acad. Dermatol.* **2005**, *53*, 253–260. [\[CrossRef\]](#) [\[PubMed\]](#)
18. Varra, V.; Woody, N.M.; Reddy, C.; Joshi, N.P.; Geiger, J.; Adelstein, D.J.; Burkey, B.B.; Scharpf, J.; Prendes, B.; Lamarre, E.D.; et al. Suboptimal outcomes in cutaneous squamous cell cancer of the head and neck with nodal metastases. *Anticancer Res.* **2018**, *38*, 5825–5830. [\[CrossRef\]](#)
19. Veness, M.J.; Morgan, G.J.; Palme, C.E.; Gebiski, V. Surgery and adjuvant radiotherapy in patients with cutaneous head and neck squamous cell carcinoma metastatic to lymph nodes: Combined treatment should be considered best practice. *Laryngoscope* **2005**, *115*, 870–875. [\[CrossRef\]](#)
20. Veness, M.J.; Palme, C.E.; Morgan, G.J. High-risk cutaneous squamous cell carcinoma of the head and neck: Results from 266 treated patients with metastatic lymph node disease. *Cancer* **2006**, *106*, 2389–2396. [\[CrossRef\]](#)
21. Schmuls, C.D.; Karia, P.S.; Carter, J.B.; Han, J.; Qureshi, A.A. Factors predictive of recurrence and death from cutaneous squamous cell carcinoma: A 10-year, single-institution cohort study. *JAMA Dermatol.* **2013**, *149*, 541–547. [\[CrossRef\]](#)
22. Osterlind, A.; Hjalgrim, H.; Kulinsky, B.; Frentz, G. Skin cancer as a cause of death in Denmark. *Br. J. Dermatol.* **1991**, *125*, 580–582. [\[CrossRef\]](#)
23. Karia, P.S.; Han, J.; Schmuls, D. Cutaneous squamous cell carcinoma: Estimated incidence of disease, nodal metastasis, and deaths from disease in the United States, 2012. *J. Am. Acad. Dermatol.* **2013**, *68*, 957–966. [\[CrossRef\]](#)
24. Migden, M.R.; Rischin, D.; Schmuls, C.D.; Guminski, A.; Hauschild, A.; Lewis, K.D.; Chung, C.H.; Hernandez-Aya, L.; Lim, A.M.; Chang, A.L.S.; et al. PD-1 blockade with cemiplimab in advanced cutaneous squamous-cell carcinoma. *N. Engl. J. Med.* **2018**, *379*, 341–351. [\[CrossRef\]](#)
25. Grob, J.J.; Gonzalez, R.; Basset-Seguín, N.; Vornicova, O.; Schachter, J.; Joshi, A.; Meyer, N.; Grange, F.; Piulats, J.M.; Bauman, J.R.; et al. Pembrolizumab monotherapy for recurrent or metastatic cutaneous squamous cell carcinoma: A single-arm phase II trial (KEYNOTE-629). *J. Clin. Oncol.* **2020**, *38*, 2916–2925. [\[CrossRef\]](#)
26. Migden, M.R.; Khushalani, N.I.; Chang, A.L.S.; Lewis, K.D.; Schmuls, C.D.; Hernandez-Aya, L.; Meier, F.; Schadendorf, D.; Guminski, A.; Hauschild, A.; et al. Cemiplimab in locally advanced cutaneous squamous cell carcinoma: Results from an open-label, phase 2, single-arm trial. *Lancet Oncol.* **2020**, *21*, 294–305. [\[CrossRef\]](#)
27. Maubec, E.; Boubaya, M.; Petrow, P.; Beylot-Barry, M.; Basset-Seguín, N.; Deschamps, L.; Grob, J.J.; Dréno, B.; Scheer-Senyearich, I.; Bloch-Queyrat, C.; et al. Phase II study of pembrolizumab as first-line, single-drug therapy for patients with unresectable cutaneous squamous cell carcinomas. *J. Clin. Oncol.* **2020**, *38*, 3051–3061. [\[CrossRef\]](#)
28. Rischin, D.; Khushalani, N.I.; Schmuls, C.D.; Guminski, A.D.; Chang, A.L.; Lewis, K.D.; Lim, A.M.; Hernandez-Aya, L.F.; Hughes, B.G.M.; Schadendorf, D.; et al. Phase II study of cemiplimab in patients (pts) with advanced cutaneous squamous cell carcinoma (CSCC): Longer follow-up. *J. Clin. Oncol.* **2020**, *38*, 10018. [\[CrossRef\]](#)
29. Rischin, D.; Migden, M.R.; Lim, A.M.; Schmuls, C.D.; Khushalani, N.I.; Hughes, B.G.M.; Schadendorf, D.; Dunn, L.A.; Hernandez-Aya, L.; Chang, A.L.S.; et al. Phase 2 study of cemiplimab in patients with metastatic cutaneous squamous cell carcinoma: Primary analysis of fixed-dosing, long-term outcome of weight-based dosing. *J. Immunother. Cancer* **2020**, *8*, e000775. [\[CrossRef\]](#)
30. Nguyen, L.S.; Ortuno, S.; Lebrun-Vignes, B.; Johnson, D.B.; Moslehi, J.J.; Hertig, A.; Salem, J.E. Transplant rejections associated with immune checkpoint inhibitors: A pharmacovigilance study and systematic literature review. *Eur. J. Cancer* **2021**, *148*, 36–47. [\[CrossRef\]](#) [\[PubMed\]](#)
31. Robert, C.; Ribas, A.; Schachter, J.; Arance, A.; Grob, J.J.; Mortier, L.; Daud, A.; Carlino, M.S.; McNeil, C.M.; Lotem, M.; et al. Pembrolizumab versus ipilimumab in advanced melanoma (KEYNOTE-006): Post-hoc 5-year results from an open-label, multicentre, randomised, controlled, phase 3 study. *Lancet Oncol.* **2019**, *20*, 1239–1251. [\[CrossRef\]](#)
32. Jansen, Y.J.L.; Rozeman, E.A.; Mason, R.; Goldinger, S.M.; Geukes Foppen, M.H.; Hojberg, L.; Schmidt, H.; van Thienen, J.V.; Haanen, J.B.A.G.; Tiainen, L.; et al. Discontinuation of anti-PD-1 antibody therapy in the absence of disease progression or treatment limiting toxicity: Clinical outcomes in advanced melanoma. *Ann. Oncol.* **2019**, *30*, 1154–1161. [\[CrossRef\]](#) [\[PubMed\]](#)
33. Libtayo 350 mg Concentrate Solution for Infusion—Summary of Product Characteristics (SmPC)—(emc) [Internet]. Available online: <https://www.medicines.org.uk/emc/product/10438> (accessed on 31 March 2021).
34. Dello Russo, C.; Cappoli, N.; Navarra, P. A comparison between the assessments of progression-free survival by local investigators versus blinded independent central reviews in phase III oncology trials. *Eur. J. Clin. Pharmacol.* **2020**, *76*, 1083–1092. [\[CrossRef\]](#)
35. Matsubara, T.; Seto, T.; Takamori, S.; Fujishita, T.; Toyozawa, R.; Ito, K.; Yamaguchi, M.; Okamoto, T. Anti-PD-1 monotherapy for advanced NSCLC patients with older age or those with poor performance status. *Oncol. Targets Ther.* **2021**, *14*, 1961–1968. [\[CrossRef\]](#)
36. Samstein, R.M.; Lee, C.H.; Shoushtari, A.N.; Hellmann, M.D.; Shen, R.; Janjigian, Y.Y.; Barron, D.A.; Zehir, A.; Jordan, E.J.; Omuro, A.; et al. Tumor mutational load predicts survival after immunotherapy across multiple cancer types. *Nat. Genet.* **2019**, *51*, 202–206. [\[CrossRef\]](#)
37. Wang, Y.; Zhou, S.; Yang, F.; Qi, X.; Wang, X.; Guan, X.; Shen, C.; Duma, N.; Vera Aguilera, J.; Chintakuntlawar, A.; et al. Treatment-related adverse events of PD-1 and PD-L1 inhibitors in clinical trials: A systematic review and meta-analysis. *JAMA Oncol.* **2019**, *5*, 1008–1019. [\[CrossRef\]](#)

38. Nayar, N.; Briscoe, K.; Penas, P.F. Toxic epidermal necrolysis-like reaction with severe satellite cell necrosis associated with nivolumab in a patient with ipilimumab refractory metastatic melanoma. *J. Immunother.* **2016**, *39*, 149–152. [[CrossRef](#)]
39. Saw, S.; Lee, H.Y.; Ng, Q.S. Pembrolizumab-induced Stevens-Johnson syndrome in non-melanoma patients. *Eur. J. Cancer* **2017**, *81*, 237–239. [[CrossRef](#)]
40. Demirtas, S.; El Aridi, L.; Acquitter, M.; Fleuret, C.; Plantin, P. Toxic epidermal necrolysis due to anti-PD1 treatment with fatal outcome. *Ann. Dermatol. Venereol.* **2017**, *144*, 65–66. [[CrossRef](#)]
41. Vivar, K.L.; Deschaine, M.; Messina, J. Epidermal programmed cell death-ligand 1 expression in TEN associated with nivolumab therapy. *J. Cutan. Pathol.* **2017**, *44*, 381–384. [[CrossRef](#)] [[PubMed](#)]
42. Rouyer, L.; Bursztejn, A.C.; Charbit, L.; Schmutz, J.L.; Moawad, S. Stevens-Johnson syndrome associated with radiation recall dermatitis in a patient treated with nivolumab. *Eur. J. Dermatol.* **2018**, *28*, 380–381. [[CrossRef](#)] [[PubMed](#)]
43. Shah, K.M.; Rancour, E.A.; Al-Omari, A.; Rahnama-Moghadam, S. Striking enhancement at the site of radiation for nivolumab-induced Stevens-Johnson syndrome. *Dermatol. Online J.* **2018**, *24*. [[CrossRef](#)]
44. Haratake, N.; Tagawa, T.; Hirai, F.; Toyokawa, G.; Miyazaki, R.; Maehara, Y. Stevens-Johnson syndrome induced by pembrolizumab in a lung cancer patient. *J. Thorac. Oncol.* **2018**, *13*, 1798–1799. [[CrossRef](#)]
45. Chirasuthat, P.; Chayavichitsilp, P. Atezolizumab-induced Stevens-Johnson syndrome in a patient with non-small cell lung carcinoma. *Case Rep. Dermatol.* **2018**, *10*, 198–202. [[CrossRef](#)]
46. Griffin, L.L.; Cove-Smith, L.; Alachkar, H.; Radford, J.A.; Brooke, R.; Linton, K.M. Toxic epidermal necrolysis (TEN) associated with the use of nivolumab (PD-1 inhibitor) for lymphoma. *JAAD Case Rep.* **2018**, *4*, 229–231. [[CrossRef](#)]
47. Salati, M.; Pifferi, M.; Baldessari, C.; Bertolini, F.; Tomasello, C.; Cascinu, S.; Barbieri, F. Stevens-Johnson syndrome during nivolumab treatment of NSCLC. *Ann. Oncol.* **2018**, *29*, 283–284. [[CrossRef](#)]
48. Hwang, A.; Iskandar, A.; Dasanu, C.A. Stevens-Johnson syndrome manifesting late in the course of pembrolizumab therapy. *J. Oncol. Pharm. Pract.* **2019**, *25*, 1520–1522. [[CrossRef](#)]
49. Dasanu, C.A. Late-onset Stevens-Johnson syndrome due to nivolumab use for hepatocellular carcinoma. *J. Oncol. Pharm. Pract.* **2019**, *25*, 2052–2055. [[CrossRef](#)]
50. Cohen, E.E.W.; Soulières, D.; Le Tourneau, C.; Dinis, J.; Licitra, L.; Ahn, M.J.; Soria, A.; Machiels, J.P.; Mach, N.; Mehra, R.; et al. Pembrolizumab versus methotrexate, docetaxel, or cetuximab for recurrent or metastatic head-and-neck squamous cell carcinoma (KEYNOTE-040): A randomised, open-label, phase 3 study. *Lancet* **2019**, *393*, 156–167. [[CrossRef](#)]
51. Cai, Z.R.; Lecours, J.; Adam, J.P. Toxic epidermal necrolysis associated with pembrolizumab. *J. Oncol. Pharm. Pract.* **2020**, *26*, 1259–1265. [[CrossRef](#)] [[PubMed](#)]
52. Keerty, D.; Koverzhenko, V.; Belinc, D.; LaPorta, K.; Haynes, E. Immune-mediated toxic epidermal necrolysis. *Cureus* **2020**, *12*, e9587. [[CrossRef](#)]
53. Cassaday, R.D.; Garcia, K.A.; Fromm, J.R. Phase 2 study of pembrolizumab for measurable residual disease in adults with acute lymphoblastic leukemia. *Blood Adv.* **2020**, *4*, 3239–3245. [[CrossRef](#)]
54. Riano, I.; Cristancho, C.; Treadwell, T. Stevens-Johnson syndrome-like reaction after exposure to pembrolizumab and recombinant zoster vaccine in a patient with metastatic lung cancer. *J. Investig. Med. High Impact Case Rep.* **2020**, *8*. [[CrossRef](#)] [[PubMed](#)]
55. Maloney, N.J.; Ravi, V.; Cheng, K.; Bach, D.Q.; Worswick, S. Stevens-Johnson syndrome and toxic epidermal necrolysis-like reactions to checkpoint inhibitors: A systematic review. *Int. J. Dermatol.* **2020**, *59*, e183–e188. [[CrossRef](#)]
56. Dodiuk-Gad, R.P.; Chung, W.H.; Valeyrie-Allanore, L.; Shear, N.H. Stevens-Johnson syndrome and toxic epidermal necrolysis: An update. *Am. J. Clin. Dermatol.* **2015**, *16*, 475–493. [[CrossRef](#)]
57. Brahmer, J.R.; Lacchetti, C.; Schneider, B.J.; Atkins, M.B.; Brassil, K.J.; Caterino, J.M.; Chau, I.; Ernstoff, M.S.; Gardner, J.M.; Ginex, P.; et al. Management of immune-related adverse events in patients treated with immune checkpoint inhibitor therapy: American Society of Clinical Oncology Clinical Practice Guideline. *J. Clin. Oncol.* **2018**, *36*, 1714–1768. [[CrossRef](#)]