



# Farmland bird assemblages exhibit higher functional and phylogenetic diversity than forest assemblages in France

Vicente García-Navas, Wilfried Thuiller

## ► To cite this version:

Vicente García-Navas, Wilfried Thuiller. Farmland bird assemblages exhibit higher functional and phylogenetic diversity than forest assemblages in France. *Journal of Biogeography*, 2020, 47 (11), pp.2392-2404. 10.1111/jbi.13950 . hal-03002108

**HAL Id: hal-03002108**

**<https://hal.science/hal-03002108>**

Submitted on 12 Nov 2020

**HAL** is a multi-disciplinary open access archive for the deposit and dissemination of scientific research documents, whether they are published or not. The documents may come from teaching and research institutions in France or abroad, or from public or private research centers.

L'archive ouverte pluridisciplinaire **HAL**, est destinée au dépôt et à la diffusion de documents scientifiques de niveau recherche, publiés ou non, émanant des établissements d'enseignement et de recherche français ou étrangers, des laboratoires publics ou privés.

# **Farmland bird assemblages exhibit higher functional and phylogenetic diversity than forest assemblages in France**

Vicente García-Navas<sup>1,2,3</sup> and Wilfred Thuiller<sup>1</sup>

<sup>1</sup> *Univ. Grenoble Alpes, Univ. Savoie Mont Blanc, CNRS, LECA, Laboratoire d'Ecologie Alpine, F-38000 Grenoble, France*

<sup>2</sup> *Department of Evolutionary Biology and Environmental Studies, University of Zurich, Zurich, Switzerland*

<sup>3</sup> *Department of Evolutionary Genetics, Centre for Ecology, Evolution and Environmental Changes (CE3C), University of Lisbon, Portugal*

Address for correspondence:

Department of Evolutionary Genetics, Faculdade de Ciências da Universidade de Lisboa  
Edifício C2, 5º Piso, Campo Grande, 1749-016 Lisboa, Portugal

E-mail: vicente.garcianavas@gmail.com.

Orcid ID: 0000-0002-9362-2663

*Keywords:* avifauna; agriculture; biodiversity; community dynamics; functional traits

*Running head:* Diversity dynamics in land bird communities

Number of tables: 1

Number of figures: 5

Word count: 7075

## **Abstract**

*Aim:* Under a global change scenario, research focused on changes in assembly patterns over spatial and temporal axes is more than timely as it will improve our understanding about how biological communities respond to anthropogenic disturbance. Despite an increasing need to assess whether associations among diversity and community metrics change in relation to environmental heterogeneity, the way in which community assembly rules vary across habitats has been hardly explored. Here, we tested for differences in patterns of functional diversity (FD) and phylogenetic diversity (PD) between farmland and forest bird communities.

*Taxon:* 107 species of breeding common birds.

*Location:* continental France.

*Methods:* We used an extensive dataset (13 years; 7,115 bird communities) from the French Breeding Bird survey in conjunction with a matrix of 142 functional traits (including information on habitat, diet, life-stories, behaviour, and morphology) to compute different metrics of FD and PD.

*Results:* We found that farmland assemblages showed higher FD and PD than forest assemblages, which were phylogenetically clustered. Both FD and PD of forest assemblages increased with increasing species richness, whereas in farmland assemblages the relationship turned out to be asymptotic in both cases. It may be due to the accumulation of generalists, which can end up displacing specialist species when the environment becomes oversaturated triggering a decline in diversity. Contrary to expectations, FD and PD of farmland assemblages increased over the study period, whereas forest assemblages showed a non-linear pattern.

Farmland and forest assemblages also showed divergent trajectories over time in relation to FD metrics.

*Main conclusions:* We conclude that, although farmland intensification has led to a sharp decline in population of farmland birds, agriculture landscapes in Southern Europe still harbor diversity-rich communities probably due to the legacy effects of past land-use (traditional practices). Our study highlights the need to take into account the influence of historic landscape configurations when assessing the effect that contemporary land uses have on biotic communities.

## Introduction

Community phylogenetics seeks to characterize the structure of communities and unravel the relative importance of chance (stochastic processes) and ecological rules (deterministic processes) in shaping community composition (reviewed in Pausas and Verdú 2010).

Specifically, at a local scale, the quantification of functional and phylogenetic structures of assemblages allows recognition of factors leading to competitive exclusion or to the coexistence of ecologically similar taxa (environmental filtering vs. limiting similarity: e.g. Stevens et al. 2012). Thus, examining both biodiversity dimensions -functional and phylogenetic- turns out to be necessary for understanding the complete composition, structure and dynamics of communities (Devictor et al. 2010a).

Although several studies have assessed the phylogenetic or functional structure of bird assemblages (most of them focused on specific bird families or clades: e.g. Graham et al. 2009; Gómez et al. 2010), there is a paucity of studies examining the relationship between the phylogenetic and functional structure of assemblages and the underlying assembly processes in contrasting habitats (Thuiller et al. 2008; but see Sobral and Cianciaruso 2016; Morelli et al. 2016). This is noteworthy because it's expected that species pools and the structure of assemblages in, for example, forests and grasslands (the two extremes along a close-open continuum) are shaped by distinct ecological, evolutionary and historical mechanisms. In addition to spatial heterogeneity, the existence of temporal variability in habitat quality constitutes an important factor to consider when addressing the response of biological communities to disturbance (e.g. Méndez et al. 2012). While some habitats have undergone significant modifications during the last decades due to drastic changes in land use, some others remain unaltered and thus, they may act as true reservoirs of biodiversity. Specifically, agriculture landscapes have changed at a great pace during the last few decades due to farming intensification (Tscharntke et al. 2005). New agricultural practices have led to habitat simplification through the expansion of monocrops, the disappearance of structural elements (hedgerows, tree lines, etc.) and the abandonment of the once common practice of letting fields lie fallow. Each one of these factors seems to have contributed to the observed decline in

farmland bird populations (Benton et al. 2003; Donald et al. 2006). Besides species richness and abundance, agricultural intensification may have an impact on other functional and structural properties of biological communities. For instance, the progressive homogenization of habitat structure may decrease the proportion of specialist species (Julliard et al. 2006). High Nature Value (HNV) farming systems, characterized by low intensity farming and diverse, small-scale mosaics of land-use types have been shown to be effective in reverting these negative effects on biodiversity (e.g. Morelli 2013; Aue et al. 2014).

Here, we take advantage of long-term breeding bird dataset on the French avifauna to investigate the processes that govern community assembly in different forest types and farmland habitats managed with a different degree of intensification. Specifically, we analyze spatial and temporal variation in the structure of local communities in order to address several hypotheses. Firstly, in terms of phylogenetic structure, it has been argued that forests contain a greater proportion of evolutionarily distinctive species compared to most human-modified habitats due to its more ancient origin (Frishkoff et al. 2014). Furthermore, forests are more stable habitats, favoring the colonization and successful establishment of many clades (Dreiss et al. 2015). On the other hand, farmland habitats represent more unpredictable and stressful conditions, which may result in physiological constraints that restrict the presence of some clades in these environments (Clavel et al. 2011). Accordingly, we hypothesize that: **(1)** farmland bird assemblages possess a lower phylogenetic diversity and are phylogenetically clustered, and **(2)** forest bird assemblages show a pattern of phylogenetic overdispersion.

Secondly, it is expected that the availability and distribution of resources largely determines the functional structure of communities (Weiher and Keddy 1995). Under harsh or stressful conditions, environmental filtering operating on convergent traits may generate functional clustering (Cavender-Bares et al. 2009), whereas in extremely productive habitats in which species primarily face adversity from competition, limiting similarity may favor the coexistence of species with different functional traits (Weiher et al. 1998; Gotelli et al. 2010). Given that forests should provide a greater availability of niches and food resources than human-modified landscapes like those resulting from agricultural practices, we predict: **(3)** a stronger effect of competition in forest sites resulting in functionally overdispersed

assemblages; and **(4)** a prevalence of functional clustering in farmland sites due to the higher environmental harshness.

Thirdly, because the probability of adding new evolutionary lineages/functional groups to an assemblage decreases as assemblages become more taxonomically diverse, phylogenetic/functional diversity is expected to be positively associated with species richness in a decelerating fashion (Cumming and Child 2009; Kluge and Kessler 2011). However, the strength of this association is expected to vary depending on the evolutionary heritage of communities and the evolutionary distinctiveness or ‘originality’ of species conforming a given assemblage (Pavoine et al. 2005). As forests represent the potential natural vegetation in the temperate zone and thus, they are considered older environments than more anthropic habitats, we expect: **(5)** a steeper relationship (i.e. diversity level-off faster) between taxonomic and phylogenetic/functional diversity in forest assemblages in comparison with farmland assemblages.

Finally, temporal trends in diversity at the community level are expected to mirror environmental changes and the anthropogenic influence on biodiversity (Magurran et al. 2010). In France, farmland bird populations have fallen by one third in the last two decades (Jiguet 2008). Reduction in effective numbers may be accompanied by a depauperation of farming bird assemblages. Meanwhile, large-scale forest maturation and afforestation have augmented in most of the Southern Europe due to increased abandonment of rural land during the last century and the restriction of agricultural practices to highly productive areas. Consequently, species associated to forested areas seem to show a positive trend (e.g. Gil-Tena et al. 2010). Based on this, we predict **(6)** the existence of differences in temporal trends between forest and farmland assemblages.

## **Material and Methods**

### *Bird data*

We used abundance data on breeding birds from the French Breeding Bird Survey (*Suivi Temporel des Oiseaux Communs*, STOC), a standardized monitoring program launched in 2001,

in which skilled volunteer ornithologists identify breeding birds by song or visual contact each spring. Briefly, a 2×2 km plot consisting of 10-point counts -separated by at least 300 m- is randomly assigned to each volunteer. Volunteers record year after year all birds seen or heard in each of the ten sites during a 5-min period. Point counts are visited at dawn twice within three weeks around mid-May to ensure the detection of both early- and late-breeders. The maximum value of the two censuses is retained for each species as yearly abundance index. More details about the scheme and census protocols are given in Monnet et al. (2014).

We analyzed data spanning a 13-yr period, from 2002 to 2014. Since there exist large differences among the study plots in terms of sampled years, we only included those plots located in farmland or forest habitats that were monitored for more than 5 years in order to avoid potential biases associated to variation in sampling effort. Forest habitats comprised broad-leaved, coniferous and mixed forests, whereas farmland plots were located in areas in which predominates one of the following uses according to the CORINE Land Cover inventory: non-irrigated arable land, complex cultivation patterns, agricultural land with significant areas of natural vegetation and pastures or permanent grasslands under agricultural use. In total, we gathered records from a total of 812 sites, of which 279 were located in forest habitats and 533 in agricultural land. Species with a large home range (raptors) and species that only breed in wetlands were excluded from the analysis because they are not properly monitored by the program. We also excluded species that were rarely observed and whose presence cannot be considered regular, but anecdotal (i.e. rare species). Our final data set included 107 species, which account for 99% of the total number of counted individuals (excluding raptors and water birds).

#### *Functional traits*

A matrix of 142 traits was compiled for the 107 bird species using an extended version of the dataset described in Thuiller et al. (2014). This extensive dataset includes information on habitat, diet, life-stories, behaviour, morphology and reproduction providing a comprehensive characterization of the ecology of each species and how they interact with the environment and with other organisms (Table S1). Traits were divided into seven categories, which included both

multi-trait and single-trait variables. Although we used the whole set of variables to quantify functional diversity (hereafter ‘generic functional diversity’) we also computed functional diversity indices separately for habitat and feeding traits (see more below). We paid special attention to these two subsets because they clearly assess different aspects of the niche, which defines the level of specialization of a given species (Devictor et al. 2010b). Habitat traits reflect the environmental requirements of each species and thus, the extent to which species overlap in their use of space (Grinnellian or scenopoetic niche). Feeding traits reflect the trophic position and the guild to which each species belongs to. That is, its place in the biotic environment and the way in which each species interacts with food and other species (Eltonian or biotrophic niche). These groups of traits correspond to different dimensions of the niche and thus, do not necessarily should exhibit congruent patterns over space or time (Cisneros et al. 2015).

#### *Phylogenetic and functional diversity indices*

##### *(a) Phylogenetic diversity*

Phylogenetic diversity (PD) reflects the accumulated evolutionary history of an assemblage, and is based on the evolutionary (patristic) distance between tips in a phylogenetic tree (Faith 1992). To determine overall PD, we computed the Faith’s PD index (Faith 1992) and associated standardized effect sizes (SES) for each of the 7,115 analyzed assemblages. This index assesses species relatedness using the sum of branch lengths of the tree connecting all taxa within an assemblage. Ultrametric phylogenetic distances between the 107 species were retrieved from a Maximum Clade Credibility tree obtained from a sample of 100 dated, calibrated molecular phylogenetic trees assembled by Thuiller et al. (2011). To assess differences that may exist in phylogenetic structure between habitat types, we also computed the SES values of the mean pairwise phylogenetic distance (MPD) and the mean nearest taxon distance (MNTD), respectively using the independent swap algorithm (Gotelli 2000). MNTD and Faith’s PD are considered “terminal” indices as they are more sensitive to patterns occurring at the tips of the tree, whereas MPD is more strongly influenced by the basal structure of the phylogenetic tree (i.e. deeper branches) (Mazel et al. 2016). Negative  $SES_{MPD/MNTD}$  values indicate phylogenetic clustering where coexisting taxa are more related to each other than expected by chance.



Negative values indicate an overdispersed phylogeny where coexisting taxa are less related to each other than would be expected at random.  $SES_{PD}$ ,  $SES_{MPD}$  and  $SES_{MNTD}$  values were calculated using the R package *picante* (Kembel et al. 2010).

*(b) Functional diversity*

Functional diversity (FD) represents variability in ecological traits among species, reflecting the ‘ecological robustness’ or resilience of assemblages, which is relevant in order to assess the capacity of an ecosystem to respond effectively to global change (Villéger et al. 2008). As an overall measure of FD, we used the Rao quadratic entropy index (Botta-Dukát 2005), a generalization of the Simpson’s index of biodiversity. Rao’s index represents the average dissimilarity between all co-occurring species in the same assemblage and is greater as the number of functionally unique species increases (Laliberté and Legendre 2010). We calculated the standardized effect size of Rao ( $SES_{Rao}$ ) using the ‘melodic’ function (de Bello et al. 2016).  $SES_{Rao}$  quantifies the number of standard deviations (SD) that observed Rao values are above or below the mean Rao of random assemblages and it has proven an accurate metric of FD (Mason et al. 2013; Mouchet et al. 2010). Under the null hypothesis of random trait distribution in species assemblages, mean  $SES_{Rao}$  equals zero. As a result,  $SES_{Rao}$  negative values indicate trait convergence (i.e. assemblages formed by taxa sharing more similar traits than expected by chance), while positive values indicate trait divergence (i.e. assemblages formed by taxa with more distinct traits than expected at random). We tested whether annual values of FD were on average significantly different from values expected at random by means of Student’s *t*-tests, comparing observed  $SES_{Rao}$  values with the null hypothesis ( $\mu = 0$ ) (Kembel et al. 2010). In addition, we obtained a functional dendrogram to compute tree-like FD indices (mean functional distance, MFD, and mean nearest taxon distance, MNTD) and associated SES values ( $SES_{MFD}$  and  $SES_{MNTD}$ ) in an analogous way to that previously reported.

We also computed three complementary multidimensional FD metrics: functional richness (FRic), functional divergence (FDiv) and functional evenness (FEve) (Mason et al. 2005; Villéger et al. 2008). An interpretation of these metrics is provided in Table 1. As the trait matrix included binary and continuous trait variables, we previously performed the following

steps in order to obtain a new set of ‘traits’ suitable to be used as input when computing the FD indices. First, a generalization of Gower’s distance was employed to calculate multivariate distances between species based on the raw trait data (Pavoine et al. 2009). We made sure the seven trait categories had a similar weight using the ‘dis.ktab’ function in the R package *ade4* (Dray and Dufour 2007). The resultant species  $\times$  species dissimilarity matrix was then subject to a Principal Coordinates Analysis (PCoA) and the six first axes of this ordination were used to build a six-dimensional convex hull from which we computed FRic, FDiv and FEve using the function ‘multidimFD’ developed by Sebastien Vill  ger. We computed these three metrics from the complete matrix of 142 traits as well as separately for Grinnellian and Eltonian traits using a matrix of habitat and feeding dissimilarity respectively. We used generalized linear mixed models (Pinheiro and Bates 2009), in which FRic/FDiv/FEve was considered the response variable and habitat type the explanatory variable to test for differences between forest and farmland assemblages. Models included study year, taxonomic richness, and study plot (to account for variability in the level of indices among sites) as covariates and random effect, respectively.

#### *Relationship between species richness and structure of assemblages*

In order to explore the relationships between species richness (SR) and the phylogenetic and functional structure of assemblages, we correlated mean values (averaged over years) of species richness, SES<sub>PD</sub> and SES<sub>Rao</sub> for each of the 812 study plots by means of Pearson’s correlations. We obtained similar results when considering each community as an independent sampling point (i.e. one point per community;  $n = 7,115$  communities) (analyses not shown).

#### *Temporal trends in phylogenetic and functional diversity*

We modeled bird diversity trends over the 2002-2014 timeframe to test whether forest and farmland assemblages exhibit similar temporal patterns. We considered five response variables: SES<sub>PD</sub>, SES<sub>Rao</sub>, FRic, FDiv and FEve. All these response variables were scaled to null mean and unit standard deviation ( $z$ -scores) prior to modeling in order to facilitate direct comparisons among them. We used generalized additive mixed models (GAMM) (Wood 2006) in which

trends were quantified by a continuous penalized spline with a degree of smoothness estimated by generalized cross validation (constrained to a maximum of 4 to avoid unjustified complexity). We included study plot as random effect to account for variability in the level of indices among sites and controlled residual spatial autocorrelation with an unconstrained two-dimensional (latitude, longitude) spline. We further added taxonomic richness as a spline covariate in all models with FRic, FDiv or FEve as response variable to correct statistically the sampling-mediated positive relationship between the number of species and the trait range in an assemblage (Barnagaud et al. 2017).

## Results

### *Differences in phylogenetic and functional structure between farmland and forest communities*

Although farmland and forest assemblages harbor a quite similar number of breeding common species (mean  $\pm$  SE; *farmland*:  $34.54 \pm 7.00$ , range: 11-56; *forest*:  $32.97 \pm 7.25$ , range: 10-56), farmland communities show a considerably higher phylogenetic diversity in comparison with forest communities ( $t = -11.07$ ,  $p < 0.001$ ) (Fig. 1a). Annual average values of phylogenetic diversity (PD) were significantly greater than zero in farmland assemblages throughout the study period, which suggests a prevalence of phylogenetic overdispersion in these communities (Fig. 2). Instead, all annual averages for forest assemblages were negative indicating a trend towards phylogenetic clustering (Fig. 2). Accordingly, standardized effect sizes of mean pairwise phylogenetic distance (MPD) and mean nearest taxon distance (MNTD) values were lower in forest assemblages in comparison with farmland assemblages ( $SES_{MPD}$ , *forest*:  $-0.49 \pm 0.71$ , *farmland*:  $0.10 \pm 0.38$ ;  $SES_{MNTD}$ , *forest*:  $-0.53 \pm 0.75$ , *farmland*:  $-0.22 \pm 0.71$ ; Fig. 1a) (both  $p$ -values  $< 0.001$ ). In farmland communities,  $SES_{PD}$  values increased over the study period, while these showed a ‘hump-shaped’ pattern in forest assemblages (Fig. 3a).

In terms of functional diversity (FD), although mean  $SES_{Rao}$  values were negative in almost all cases (Fig. 2), forest assemblages showed significantly lower values in comparison with farmland assemblages (*forest*:  $-0.48 \pm 0.40$ , *farmland*:  $-0.04 \pm 0.33$ ;  $t = -19.26$ ,  $p < 0.001$ ).

In both habitats, temporal trends for  $SES_{Rao}$  values followed a similar pattern to that observed for PD (Fig. 3a), indicating a tight correlation between both facets (farmland:  $\rho = 0.27$ ,  $p < 0.001$ ; forest:  $\rho = 0.51$ ,  $p < 0.001$ ). The obtained values for both metrics of functional structure ( $SES_{MFD}$  and  $SES_{MNTD}$ ) indicated that forest assemblages exhibit a stronger signature of functional clustering ( $SES_{MFD}$ , *forest*:  $-0.39 \pm 0.35$ , *farmland*:  $-0.11 \pm 0.72$ ;  $SES_{MNTD}$ , *forest*:  $-0.33 \pm 0.39$ , *farmland*:  $-0.20 \pm 0.70$ ; Fig. 1a) (both p-values  $< 0.001$ ).

Farmland communities also differed significantly from those in forests with respect to two of the three complementary functional diversity indices; functional richness (FRic) and divergence (FDiv) (Table 1). Overall, farmland communities occupy a greater amount of functional space than forest assemblages irrespective of the category to which they belong to (Fig. 4). Temporal trends in FRic and FDiv for farmland and forest assemblages showed divergent patterns (Fig. 3b). Trait range (FRic) and spread (FDiv) within the functional space decreased in the forest assemblages, whereas both indices tended to increase in farmland communities. Bird assemblages appeared to become less functionally even over the study period (Fig. 3b).

When grouping functional traits into different categories (subsets), we observed that, similar to generic FD, the FRic and FDiv of both feeding and habitat traits were greater in farmland assemblages (Table 1). In contrast, the regularity of species' abundance distribution in the functional space (functional evenness) did not differ significantly between farmland and forest assemblages in either case (Table 1). It means that, although the amount of niche space filled tend to vary between farmland and forest assemblages, the way in which this space is filled does not differ between habitats.

#### *Species richness versus structure of assemblages*

The sign of the relationship between species richness (SR) and both functional and phylogenetic structure varied between habitat categories. Both PD and FD of forest assemblages increased with increasing SR, indicating that poor assemblages were phylogenetic and functionally clustered and that random patterns have a greater influence in richer assemblages (PD:  $\rho = 0.37$ ,  $p < 0.001$ ; FD:  $\rho = 0.38$ ,  $p < 0.001$ ; Fig. 5, Fig. S1). In contrast, in farmland assemblages, the

correlation between SR and phylogenetic and functional structure was non-significant in either case (both p-values > 0.1). Rather, the relationship turned out to be asymptotic in both cases (Fig. 5, Fig. S1). In fact, albeit non-significant, the model that included the quadratic term of SR provided a better fit to the data than did the model including the linear term of SR (PD, SR: estimate =  $0.37 \pm 0.27$ ,  $t = 1.35$ ,  $p = 0.17$ ;  $SR^2$ : estimate =  $-0.79 \pm 0.27$ ,  $t = -2.88$ ,  $p < 0.01$ ; FD, SR: estimate =  $0.06 \pm 0.26$ ,  $t = 0.23$ ,  $p = 0.81$ ;  $SR^2$ : estimate =  $-0.43 \pm 0.26$ ,  $t = -1.66$ ,  $p = 0.09$ ).

## Discussion

### *Phylogenetic structure*

Although it is expected that severe habitats such as savannas (Almeida et al. 2018) and agricultural landscapes (Deikumah et al. 2017) tend to harbor assemblages with lower phylogenetic diversity (PD) because the persistence of some lineages is jeopardized, we found the opposite pattern; forest assemblages exhibited lower PD than those located in farmlands. This result indicates that, although farmland intensification has led to a sharp decline in populations of farmland birds, agriculture landscapes still harbor phylogenetically rich communities probably due to the legacy effects of past land-use (Farina 1997). The Mediterranean basin has experienced thousands of years of human landscape modification for livestock and agricultural purposes, with forest destruction the most obvious consequence of such an action (Blondel 2006). As a result of traditional landscape design and management by humans, and in discordance with general assumptions on the relationship between biodiversity and habitat degradation, Mediterranean bird communities do not reach their maximum biodiversity in pristine oak woodland, but in agro-sylvo-pastoral landscape mosaics (Blondel and Aronson 1999). In addition, it has been suggested that most of the few bird groups that differentiated within the Mediterranean region are fundamentally birds of open habitats and scrublands (e.g. *Sylvia* species) (Covas and Blondel 1998). All these factors may have contributed to the existence of a higher diversity in farmland assemblages. In this respect, it should be noted that the Mediterranean region only comprises a relatively small portion of

continental France. However, traditional agroforestry systems in other French regions share key features with those typical from Mediterranean environments *sensu stricto*. For example, original *bocages*, prevalent in Western France (Atlantic zone), consist of permanent meadows used for livestock farming divided into small hedged fields interspersed with groves of trees, which provide shelter and food for a host of animals. This patchwork-like environment dating back from the Iron Age is evolving rapidly in a trend towards simplification (Pointereau and Bazile 1995). Thus, intermediate levels of human-induced disturbance throughout civilizations seem to have contributed to keeping rural landscapes heterogeneous and promoting biological diversity. At the present time, agricultural communities may still bear the imprint of historical landscape configurations, which is thought to persist for decades or centuries due to the lagged response of species to landscape change (“ghosts of landscape past”; With 2007).

On the other hand, most forests in the temperate zone -including Southern Europe- are secondary forests that developed after logging of primeval forests or abandonment of agricultural lands (Blondel 2018). Species inhabiting these forests constitute an impoverished subset of the pool of forest specialists from the Nearctic-Palearctic region, many of them being habitat generalists able to colonize a wide variety of forest environments (Covas and Blondel 1998). Hence, Southern Europe forests would have lost most of the forest specialists a long time ago. In fact, we found that forest communities are made up of species with a lower degree of specialization than those conforming farmland assemblages (Gini specialization index; *forest*:  $0.20 \pm 0.03$ , *farmland*:  $0.22 \pm 0.03$ ; see Fig. S2). Such a circumstance, coupled with habitat fragmentation, could explain the existence of strong phylogenetic underdispersion in forest communities. On the contrary, the level of clustering was much lower in farmland assemblages, mostly in plots with significant areas of natural vegetation. It suggests that the presence of structural elements such as field margins, hedgerows and non-cultivated areas (small woodland patches) increases substantially the diversity of lineages that colonizes and persists in these environments (e.g. Doxa et al. 2012). The existence of a subtler signature of environmental filtering may have to do with the fact that domestications of animals and plants began about 4,000 years ago in this region and agriculture environments had been occupied repeatedly by

phylogenetically-divergent lineages in multiple colonization events along its long and dynamic history (Blondel 2006).

#### *Functional structure*

In terms of functional diversity (FD), and in accordance with the phylogenetic results, we found a higher FD in farmland assemblages. A similar result has been previously observed in northern Spain (Clavero and Brotons 2010), central Italy (Morelli et al. 2018) and tropical montane Ethiopia (Gove et al. 2013), which indicates that bird communities in certain agricultural landscapes sustain distinct species from an ecological perspective. Whilst, in concert with that reported in terms of phylogenetic structure, forest assemblages showed a higher degree of functional clustering, which means that they harbor a greater number of functionally similar species.

The highest values of functional richness (FRic) were found in communities from low-intensity farmlands (agricultural land with significant proportions of natural vegetation), which represent traditional land uses. At the opposite end, coniferous forests constitute the habitat type supporting the lowest values of FRic probably due to its low spatial heterogeneity in vertical and horizontal structure (Fig. 4). Differences in FRic between farmland and forest assemblages were less pronounced when considering only Eltonian traits because the low richness in terms of species' feeding traits observed in communities located in lands dominated by complex cultivation patterns or non-irrigated land. It suggests a reduced trophic-niche space in the most anthropogenized and simple agricultural landscapes.

Obtained values of functional divergence (FDiv) indicate a higher degree of niche differentiation among species within farmland communities in comparison with forest communities. That is, the most abundant species in farmland assemblages are very dissimilar which may be due to -as above mentioned- limiting similarity precludes the co-existence of functionally redundant taxa, or the availability of a great variety of feeding resources (open fields for seed-eating species, bushes for frugivorous species and groves of trees for those that are canopy-gleaners) and nesting substrates in some agricultural systems. Differences in FDiv between habitats remained when analyzing Eltonian and Grinnellian traits separately, which

implies the existence of a higher level of differentiation in farmland assemblages at different dimensions of the niche.

Regarding the way in which the biomass of the species assemblage is distributed in niche space (functional evenness, FEve), our results suggests that ecological resources are exploited in a pretty similar manner in both habitats. It means that the availability of niches potentially available but unused by the bird species of the community does not differ between farmlands and forests, a similar result to that reported by Morelli et al. (2018). According to the obtained FEve values, both habitat types exhibit a moderate uniformity of species in functional space (intermediate FEve values; Fig. 4). Thus, by using functional evenness as proxy of community resilience, we hypothesize that farmland and forest assemblages are equally vulnerable to modifications (e.g., climate change or biological invasions).

In terms of functional structure, forest bird assemblages showed a pattern of clustering, contradicting our initial hypothesis of functional repulsion as result of the prevalence of limiting similarity in more benign habitats. This result agrees with that reported in forest bird assemblages from the Cerrado (Sobral and Cianciaruso, 2016) and the Brazilian Atlantic Forest (Rocha et al. 2019). Although temperate forests are not as structurally complex and dense as rainforests from the tropical region, one possibility is that closed habitats (i.e. forests) act as local environmental filter restricting the occurrence of large birds or those that require open country (e.g. ground-feeding insectivores like pipits and larks).

#### *Relationship between taxonomic richness and structure of assemblages*

The shape of the relationships between metrics of biodiversity and taxonomic richness differed between habitats. While in forest habitats, PD and FD increased linearly with increasing species richness with no evidence of a saturating effect, within farmlands such a relationship seems to be asymptotical indicating that beyond a certain threshold (~35 spp.) both dimensions of biodiversity tend to decay (Fig. 5) (see also Hanspach et al. 2015). It suggests that forests are less-redundant systems than farmlands, in which an increase in the number of species not necessarily increase the functional diversity of the community. Such a pattern may be due to the accumulation of generalist species, which can end up displacing specialist species when the



environment becomes oversaturated triggering a decline in diversity (Clavero and Brotons 2010).

### *Temporal trends*

Phylogenetic and functional diversity of farmland bird assemblages increased over the period indicating that decreasing bird abundances in agricultural landscapes are not associated with a phylogenetic impoverishment or functional homogenization of local bird assemblages. This tendency was not observed in forest assemblages, where diversity trends showed a non-linear pattern. In a similar way, multidimensional FD indices presented distinct temporal trends in both habitat types. Whereas the volume of functional space and the distribution of species within the convex hull have decreased over time in forest assemblages, these metrics tend to show a positive trajectory in farmland communities. It indicates that the drastic declines documented in bird populations across the French countryside have not led to a depauperation of local communities in terms of PD and FD. This finding could be due to the existence of a time-lag or a decoupling between the mechanisms regulating species populations (e.g. niche processes) and community-level properties that emerge from these species, which heavily depend on biotic interactions. Hence, compensatory dynamics could explain the existence of a decrease in functional richness of forest communities despite most forest species show stable trends if, for example, increases in the populations of forest species are offset by decreases in the populations of transient species (Santini et al. 2017). In this sense, species populations and diversity indices could exhibit different responses to disturbances, which highlights the need for a better understanding of how the impacts of shifts at the species level relate to community-level descriptors (Supp and Ernest 2014).

Lastly, a caveat of this study is that we did not account for imperfect detection of species in our analyses, a factor that may depend on the habitat type in which the survey is conducted. For instance, in a recent study, Kułaga and Budka (2019) compared the number of bird species detected through human observers (in the field) and recordings by autonomous sound recorders (manually analyzed by observers in the lab) within two different habitats -forest and farmland- in Poland. They reported that observers detected more species than recorders in

farmland, but not in the forest (Kułaga and Budka, 2019). Regarding this, we have to point out that although our results should be interpreted with caution, this potential bias does not affect the main findings of this study, that is, the different trajectory that farmland and forest assemblages exhibit over time.

### *Conclusions*

Several intriguing ideas for both community ecologists and conservationists arise from this study considering that agro-ecosystems constitute one of the most common landscapes throughout the world and represent the main habitat for many bird species (Pain and Pienkowski 1997). First, our study supports the notion that heterogeneous landscapes in which environmental conditions change significantly within short distances resulting in small-scale mosaics typical of the Mediterranean Basin and Western France, may benefit generalist species and impose limits to the potential ranges of species requiring large continuous areas of forest. Second, phylogenetic diversity can be a surrogate for high-dimensional trait diversity and thus, by protecting more phylogenetic diversity, we should also protect a greater amount of total functional diversity (Faith 2018). Third, some of the observed patterns suggest that past land use may generate strong legacy effects on biotic communities and thus, it's necessary to consider the influence of historic landscape configurations when assessing the effect that contemporary configurations have on them. Finally, and regarding this latter, community-level properties may be particularly resilient to land use alterations and thus, their accuracy as indicators of change may be limited. Consequently, gaining a better understanding of how changes at the species population level scale up to shape community properties constitutes a major challenge for biodiversity research.

### **Acknowledgements**

We are indebted to all volunteers who took part in the French breeding bird survey. Julien Renaud helped us to compile information on habitat types and land uses. VGN was funded by a grant from the 'Make Our Planet Great Again' initiative (Campus France) during his stay at the

Laboratoire d'Ecologie Alpine (LECA), and a Forschungskredit (ref. FK-104-18) from the University of Zurich. WT received funding from the ERA-Net BiodivERsA-Belmont Forum, with the national funder Agence Nationale pour la Recherche (ANR-18-EBI4-0009), part of the 2018 Joint call BiodivERsA-Belmont Forum call (project 'FutureWeb').

*Data accessibility:* The dataset employed in this study will be deposited in a public repository upon acceptance.

*Conflict of interest:* The authors declare that they have no conflict of interest.

#### *Biosketch*

**Vicente García-Navas** is a FCT researcher at the University of Lisbon. His work addresses how historical, phylogenetic and spatial patterns of eco-morphological and lineage diversity are influenced by biotic and abiotic factors and the interaction between them.

**Wilfred Thuiller** is a senior scientist at CNRS based in Grenoble. His research is focused in investigating the impacts of global change on biodiversity.

## References

- Almeida SM, Juen L, Sobral FL, Dantas Santos MP (2018) The influence of biogeographic history on the functional and phylogenetic diversity of passerine birds in savannas and forests of the Brazilian Amazon. *Ecology and Evolution*, 8: 3617-3627.
- Aue B, Diekötter T, Gottschalk TK, Wolters V, Hotes S (2014) How High Nature Value (HNV) farmland is related to bird diversity in agro-ecosystems - Towards a versatile tool for biodiversity monitoring and conservation planning. *Agriculture Ecosystems and Environment*, 194: 58-64.
- Barnagaud JY, Gaüzère P, Zuckerberg B, Princé K, Svenning J-C (2017) Temporal changes in bird functional diversity across the United States. *Oecologia*, 185: 737-748.
- Benton TG, Vickery JA, Wilson JD (2003) Farmland biodiversity: is habitat heterogeneity the key? *Trends in Ecology and Evolution*, 18: 182-188.
- Blondel J (2006) The 'Design' of Mediterranean Landscapes: A Millennial Story of Humans and Ecological Systems during the Historic Period. *Human Ecology*, 34: 713-729.
- Blondel J (2018) Origins and dynamics of forest birds of the Northern Hemisphere. In: *Ecology and Conservation of Forest Birds*. Mikusiński G., Roberge J-M, Fuller RJ (eds), Cambridge University Press, Cambridge: 11-50.
- Blondel J, Aronson J (1999) *Biology and wildlife of the Mediterranean region*. Oxford University Press, Oxford.

- Botta-Dukát Z (2005) Rao's quadratic entropy as a measure of functional diversity based on multiple traits. *Journal of Vegetation Science*, 16: 533-540.
- Cavender-Bares J, Kozak KH, Fine PVA, Kembel SW (2009) The merging of community ecology and phylogenetic biology. *Ecology Letters*, 12: 693-715.
- Cisneros LM, Fagan ME, Willig MR (2015) Season-specific and guild-specific effects of anthropogenic landscape modification on metacommunity structure of tropical bats. *Journal of Animal Ecology*, 84: 373-385.
- Clavel J, Julliard R, Devictor V (2011) Worldwide decline of specialist species: toward a global functional homogenization? *Frontiers in Ecology and the Environment*, 9: 222-228.
- Clavero M, Brotons L (2010) Functional homogenization of bird communities along habitat gradients: accounting for niche multidimensionality. *Global Ecology and Biogeography*, 19: 684-696.
- Covas R, Blondel J (1998) Biogeography and history of the Mediterranean bird fauna. *Ibis*, 140: 395-407.
- Cumming GS, Child MF (2009) Contrasting spatial patterns of taxonomic and functional richness offer insights into potential loss of ecosystem services. *Philosophical Transactions of the Royal Society B*, 364: 1683-1692.
- de Bello F, Carmona CP, Lepš J, Szava-Kovats R, Pärte M (2016) Functional diversity through the mean trait dissimilarity: Resolving shortcomings with existing paradigms and algorithms. *Oecologia*, 180: 933.
- Deikumah JP, Kwafo R, Konadu VA (2017) Land use types influenced avian assemblage structure in a forest–agriculture landscape in Ghana. *Ecology and Evolution*, 7: 8685-8697.
- Devictor V, Mouillot D, Meynard C, Jiguet F, Thuiller W, Mouquet N (2010) Spatial mismatch and congruence between taxonomic, phylogenetic and functional diversity: the need for integrative conservation strategies in a changing world. *Ecology Letters*, 13: 1030-1040.
- Devictor V, Clavel J, Julliard R, Lavergne S, Mouillot D, Thuiller W, Venail P, Villéger S, Mouquet N (2010) Defining and measuring ecological specialization. *Journal of Applied Ecology*, 47: 15-25.
- Donald P, Green RE, Heath MF (2001) Agricultural intensification and the collapse of Europe's farmland bird populations. *Proceedings of the Royal Society of London B*, 268: 25-29.
- Donald PF, Sanderson FJ, Burfield IJ, Van Bommel FPJ (2006) Further evidence of continent-wide impacts of agricultural intensification on European farmland birds, 1990–2000. *Agriculture Ecosystems and Environment*, 116: 189-196.
- Doxa A, Paracchini ML, Pointereau P, Devictor V, Jiguet F (2012) Preventing biotic homogenization of farmland bird communities: the role of High Nature Value farmland. *Agriculture, Ecosystems & Environment*, 148: 83-88.
- Dray S, Dufour AB (2007) The *ade4* package: Implementing the duality diagram for ecologists. *Journal of Statistical Software*, 22: 1-20.

- Dreiss LM, Burgio KR, Cisneros LM, Klingbeil BT, Patterson BD, Presley SJ, Willig MR (2015) Taxonomic, functional, and phylogenetic dimensions of rodent biodiversity along an extensive tropical elevational gradient. *Ecography*, 38: 876-888.
- Faith DP (1992) Conservation evaluation and phylogenetic diversity. *Biological Conservation*, 61: 1-10.
- Faith DP (2018) *Phylogenetic diversity and conservation evaluation: perspectives on multiple values, indices, and scales of application*. In: *Phylogenetic Diversity. Applications and Challenges in Biodiversity Science*. Scherson R, Faith DP (Eds), Springer, Cham.
- Farina A (1997) Landscape structure and breeding bird distribution in a sub-mediterranean agro-ecosystem. *Landscape Ecology*, 12: 365-378.
- Frishkoff LO, Karp DS, M'Gonigle LK (2014) Loss of avian phylogenetic diversity in neotropical agricultural systems. *Science*, 345: 1343-1346.
- Gil-Tena A, Brotons L, Saura S (2010) Effects of forest landscape change and management on the range expansion of forest bird species in the Mediterranean region. *Forest Ecology and Management*, 259: 1338-1346.
- Gómez JP, Bravo GA, Brumfield RT, Tello JG, Cadena CD (2010) A phylogenetic approach to disentangling the role of competition and habitat filtering in community assembly of Neotropical forest birds. *Journal of Animal Ecology*, 79:1181-1192.
- Gotelli NJ (2000) Null model analysis of species co-occurrence patterns. *Ecology*, 81: 2606-2621.
- Gotelli NJ, Graves GR, Rahbek C (2010) Macroecological signals of species interactions in the Danish avifauna. *Proceedings of National Academy of Sciences USA*, 107: 5030-5035.
- Gove AD, Hylander K, Nemomissa S, Shimelis A, Enkossa W (2013) Structurally complex farms support high avian functional diversity in tropical montane Ethiopia. *Journal of Tropical Ecology*, 29: 87-97.
- Graham CH, Parra JL, Rahbek C, McGuire JA (2009) Phylogenetic structure in tropical hummingbird communities. *Proceedings of the National Academy of Sciences of the United States of America*, 106: 19673-19678.
- Hanspach J, Loos J, Dorresteijn I, von Wehrden H, Moga CI, David A (2015) Functional diversity and trait composition of butterfly and bird communities in farmlands of Central Romania. *Ecosystem Health and Sustainability*, 1: 1-8.
- Jiguet F (2008) Suivi Temporel des Oiseaux Communs. Bilan 2007 pour la France. *Ornithos*, 15: 73-83.
- Julliard R, Clavel J, Devictor V, Jiguet F, Couvet D (2006) Spatial segregation of specialists and generalists in bird communities. *Ecology Letters* 9: 1237-1244.
- Kembel SW, Cowan PD, Helmus MR, Cornwell WK, Morlon H, Ackerly DD, Blomberg SP, Webb CO (2010) *picante*: R tools for integrating phylogenies and ecology. *Bioinformatics*, 26: 1463-1464.

- Kluge J, Kessler M (2011) Phylogenetic diversity, trait diversity and niches: species assembly of ferns along a tropical elevational gradient. *Journal of Biogeography*, 38: 394-405.
- Kułaga K, Budka M (2019) Bird species detection by an observer and an autonomous sound recorder in two different environments: Forest and farmland. *PLoS One*, 14: e021197.
- Laliberté E, Legendre P (2010) A distance-based framework for measuring functional diversity from multiple traits. *Ecology*, 91: 299-305.
- Magurran AE, Baillie SR, Buckland ST, Dick JMP, Elston DA, Scott EM, RI Smith, PJ Somerfield, AD Watt (2010) Long-term datasets in biodiversity research and monitoring: assessing change in ecological communities through time. *Trends in Ecology and Evolution*, 25: 574-582.
- Mason NW, Mouillot D, Lee WG, Wilson JB (2005) Functional richness, functional evenness and functional divergence: the primary components of functional diversity. *Oikos*, 111: 112-118.
- Mason NW, Bello F, Mouillot D, Pavoine S, Dray S (2013) A guide for using functional diversity indices to reveal changes in assembly processes along ecological gradients. *Journal of Vegetation Science*, 24: 794-806.
- Mazel F, Davies TJ, Gallien L, Renaud J, Groussin M, Münkemüller T, Thuiller W (2016) Influence of tree shape and evolutionary time-scale on phylogenetic diversity metrics. *Ecography*, 39: 913-920.
- Méndez V, Gill JA, Burton NH, Austin GE, Petchey OL, Davies RG (2012) Functional diversity across space and time: trends in wader communities on British estuaries. *Diversity and Distributions*, 18: 356-365.
- Monnet A-C, Jiguet F, Meynard CN, Mouillot D, Mouquet N, Thuiller W, Devictor V (2014) Asynchrony of taxonomic, functional and phylogenetic diversity in birds. *Global Ecology and Biogeography*, 23: 780-788.
- Morelli F (2013) Relative importance of marginal vegetation (shrubs, hedgerows, isolated trees) surrogate of HNV farmland for bird species distribution in Central Italy. *Ecological Engineering*, 57: 261-266
- Morelli F, Benedetti Y, Ibáñez-Álamo JD, Jokimäki J, Mänd R, Tryjanowski P, Møller AP (2016) Evidence of evolutionary homogenization of bird communities in urban environments across Europe. *Global Ecology and Biogeography*, 25: 1284-1293.
- Morelli F, Benedetti Y, Perna P, Santolini R (2018) Associations among taxonomic diversity, functional diversity and evolutionary distinctiveness vary among environments. *Ecological Indicators*, 88: 8-16.
- Mouchet MA, Villéger S, Mason NW, Mouillot D (2010) Functional diversity measures: an overview of their redundancy and their ability to discriminate community assembly rules. *Functional Ecology*, 24: 867-876.

- Mulwa R, Böhning-Gaese K, Schleuning M (2012) High Bird Species Diversity in Structurally Heterogeneous Farmland in Western Kenya. *Biotropica*, 44: 801-809.
- Pain DJ, Pienkowski MW (1997) *Birds and farming in Europe: The Common Agricultural Policy and its implications for bird conservation*. Academic Press, London.
- Pausas JG, Verdú M (2010) The jungle of methods for evaluating phenotypic and phylogenetic structure of communities. *BioScience*, 60: 614-625.
- Pavoine S, Ollier S, Dufour AB (2005) Is the originality of a species measurable? *Ecology Letters*, 8: 579-586.
- Pavoine S, Vallet J, Dufour A-B, Gachet S, Daniel H (2009) On the challenge of treating various types of variables: application for improving the measurement of functional diversity. *Oikos*, 118: 391-402.
- Pinheiro J, Bates D (2009) *Mixed-effects models in S and S-PLUS, 2nd edn*. Springer, New York.
- Pointereau P, Bazile D (1995) *L'arbre des champs : haies, alignements et prés-vergers ou l'art du bocage*. Solagro, Toulouse, 150 p.
- Rocha J, Laps RR, Machado CG, Campiolo S (2019) The conservation value of cacao agroforestry for bird functional diversity in tropical agricultural landscapes. *Ecology and Evolution*, 9: 7903-7913.
- Santini L, Belmaker J, Costello MJ et al (2017) Assessing the suitability of diversity metrics to detect biodiversity change. *Biological Conservation*, 213: 341-350.
- Sobral FL, Cianciaruso MV (2016) Functional and phylogenetic structure of forest and savanna bird assemblages across spatial scales. *Ecography*, 39: 533-541.
- Stevens RD, Gavilanez MM, Tello JS, Ray DA (2012) Phylogenetic structure illuminates the mechanistic role of environmental heterogeneity in community organization. *Journal of Animal Ecology*, 81: 455-462.
- Supp SR, Ernest SKM (2014) Species-level and community-level responses to disturbance: a cross-community analysis. *Ecology*, 95: 1717-1723.
- Thuiller W, Albert CH, Araújo MB, Berry PM, Cabeza M, Guisan G, Hickler T, Midgley GF, Paterson J, Schurr FM, Sykes MT, Zimmermann NE (2008) Predicting global change impacts on plant species distributions: future challenges. *Perspectives in Plant Ecology, Evolution and Systematics*, 9: 137-152.
- Thuiller W, Lavergne S, Roquet C, Boulangeat I, Lafourcade B, Araujo MB (2011) Consequences of climate change on the tree of life in Europe. *Nature*, 470: 531-534.
- Thuiller W, Pironon S, Psomas A, Barbet-Massin M, Jiguet F, Lavergne S, Pearman PB, Renaud J, Zupan L, Zimmermann NE (2014) The European functional tree of bird life in face of global change. *Nature Communications*, 5: 3118.

- Tscharntke T, Klein AM, Kruess A, Steffan-Dewenter I, Thies C (2005) Landscape perspectives on agricultural intensification and biodiversity ecosystem service management. *Ecology Letters*, 8: 857-874.
- Villéger S, Mason NWH, Mouillot D (2008) New multidimensional functional diversity indices for a multifaceted framework in functional ecology. *Ecology*, 89,2290-2301.
- Weiher E, Clarke GDP, Keddy PA (1998) Community assembly rules, morphological dispersion, and the coexistence of plant species. *Oikos*, 81: 309-322.
- Weiher E, Keddy PA (1995) Assembly rules, null models, and trait dispersion: new questions from old patterns. *Oikos*, 74: 159-164.
- With KA (2007) *Invoking the Ghosts of Landscapes Past to Understand the Landscape Ecology of the Present... and the Future*. In: *Temporal Dimensions of Landscape Ecology: Wildlife Responses to Variable Resources*. Bissonette JA, Storch I (editors), Springer.
- Wood SN (2006) *Generalized additive models. An introduction with R*. Chapman & Hall/CRC, London.



1 **Table 1.** Descriptive summary (means  $\pm$  SE) of habitat differences in French bird functional diversities for the 2002-2014 period. Functional richness (FRic) is  
2 the amount of the functional space filled by the community; functional divergence (FDiv) measures the degree to which the abundance of a community is  
3 distributed toward the outer margins of occupied trait space and can thought of as functional ‘specialization’; functional evenness (FEve) quantifies the  
4 regularity of species’ abundance distribution in the functional space to allow effective utilization of the entire range of resources available.

Indices	Farmland ( <i>n</i> = 4,749)	Forest ( <i>n</i> = 2,366)	test ( <i>p</i> -value)
Generic functional diversity (142 traits)			
FRic	0.243 $\pm$ 0.098	0.172 $\pm$ 0.110	-14.74 (<0.001)
FDiv	0.858 $\pm$ 0.034	0.831 $\pm$ 0.036	-12.41 (<0.001)
FEve	0.667 $\pm$ 0.054	0.664 $\pm$ 0.056	-0.77 (0.44)
Habitat – <i>Grinellian niche</i> (81 traits)			
FRic	0.163 $\pm$ 0.098	0.134 $\pm$ 0.108	-3.10 (<0.01)
FDiv	0.843 $\pm$ 0.049	0.795 $\pm$ 0.049	14.88 (<0.001)
FEve	0.543 $\pm$ 0.056	0.541 $\pm$ 0.057	-0.66 (0.51)
Feeding – <i>Eltonian niche</i> (38 traits)			
FRic	0.229 $\pm$ 0.108	0.225 $\pm$ 0.113	3.57 (<0.001)
FDiv	0.840 $\pm$ 0.033	0.822 $\pm$ 0.033	-9.97 (<0.001)
FEve	0.613 $\pm$ 0.055	0.619 $\pm$ 0.057	1.71 (0.08)

*Figure captions*

**Figure 1.** Differences in phylogenetic diversity (PD) and phylogenetic structure (left), and functional diversity (FD) and functional structure (right) among breeding bird assemblages from farmlands and forests. Bars are equivalent to confidence intervals of 95%. The two main habitat types are broken down into different habitat categories according to the CORINE Land Use classification (1: agricultural land with significant areas of natural vegetation,  $n = 260$ ; 2: pastures or permanent grasslands under agricultural use,  $n = 1397$ ; 3: non-irrigated arable land,  $n = 2112$ ; 4: complex cultivation patterns,  $n = 980$ ; 5: mixed forest,  $n = 321$ ; 6: broad-leaved forest,  $n = 1559$ ; 7: coniferous forest,  $n = 486$ ).  $SES_{PD}$  = standardized effect sizes of PD;  $SES_{MPD/MFD}$  = standardized effect sizes of MPD/MFD;  $SES_{MNTD}$  = standardized effect sizes of MNTD (computed from both phylogenetic and functional distances). Habitat differences remained statistically significant when using raw values of PD (farmland:  $1709 \pm 277$ ; forest:  $1586 \pm 304$ ).

**Figure 2.** Annual mean values ( $\pm$  95% CI) of phylogenetic ( $SES_{PD}$ ) and functional diversity ( $SES_{Rao}$ ) and results of  $t$ -tests testing whether values were significantly different from zero ( $p$ -values in brackets; \*\*\*:  $<0.001$ ; \*\*:  $<0.01$ ; \*:  $<0.05$ ;  $ns$ :  $>0.05$ ). Negative standardized metric reflects a relative clustering of species while a positive standardized metric reflects a relative overdispersion of species.

**Figure 3.** Temporal trends in (a) phylogenetic ( $SES_{PD}$ ) and generic functional ( $SES_{Rao}$ ) diversity, and (b) multidimensional functional diversity metrics (FRic, FDiv and FEve) over the study period (2002-2014). Trends are represented as smoothed curves fitted with GAMM. Diversity indices were scaled to mean = 0 and SD = 1 to ease comparisons.

**Figure 4.** Functional diversity quantified in terms of functional richness, functional divergence, and functional evenness of farmland and forest bird assemblages in France over the period 2002-2014. Values were standardized as  $z$ -cores to facilitate comparison among the different

subsets. Bars represent 95% confidence intervals. The two main habitat types are broken down into different habitat categories according to the CORINE Land Use classification for illustrative purposes (see Fig. 1). Pictures describing each habitat category were obtained from the Copernicus website (<https://land.copernicus.eu/>).

**Figure 5.** Relationship between species richness of forest and farmland bird assemblages and their respective standardized effect size (SES) of phylogenetic (Faith's PD) and functional (Rao index) diversity. Overplotting (density) of points is indicated by darker shades of gray. In the insets, polynomial functions were fitted to visualize trends in the data.

Figure 1

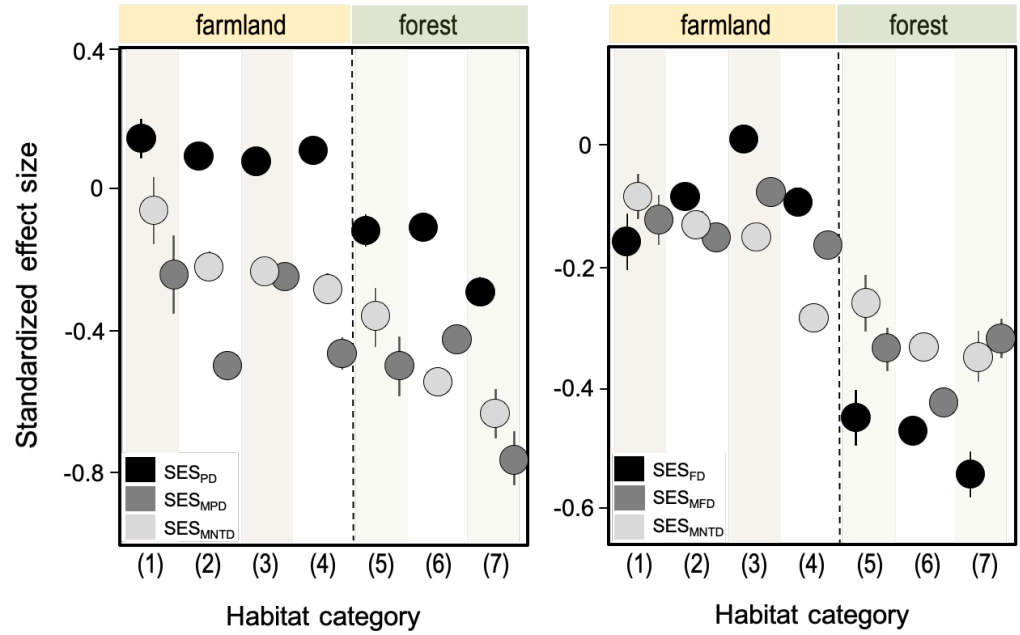
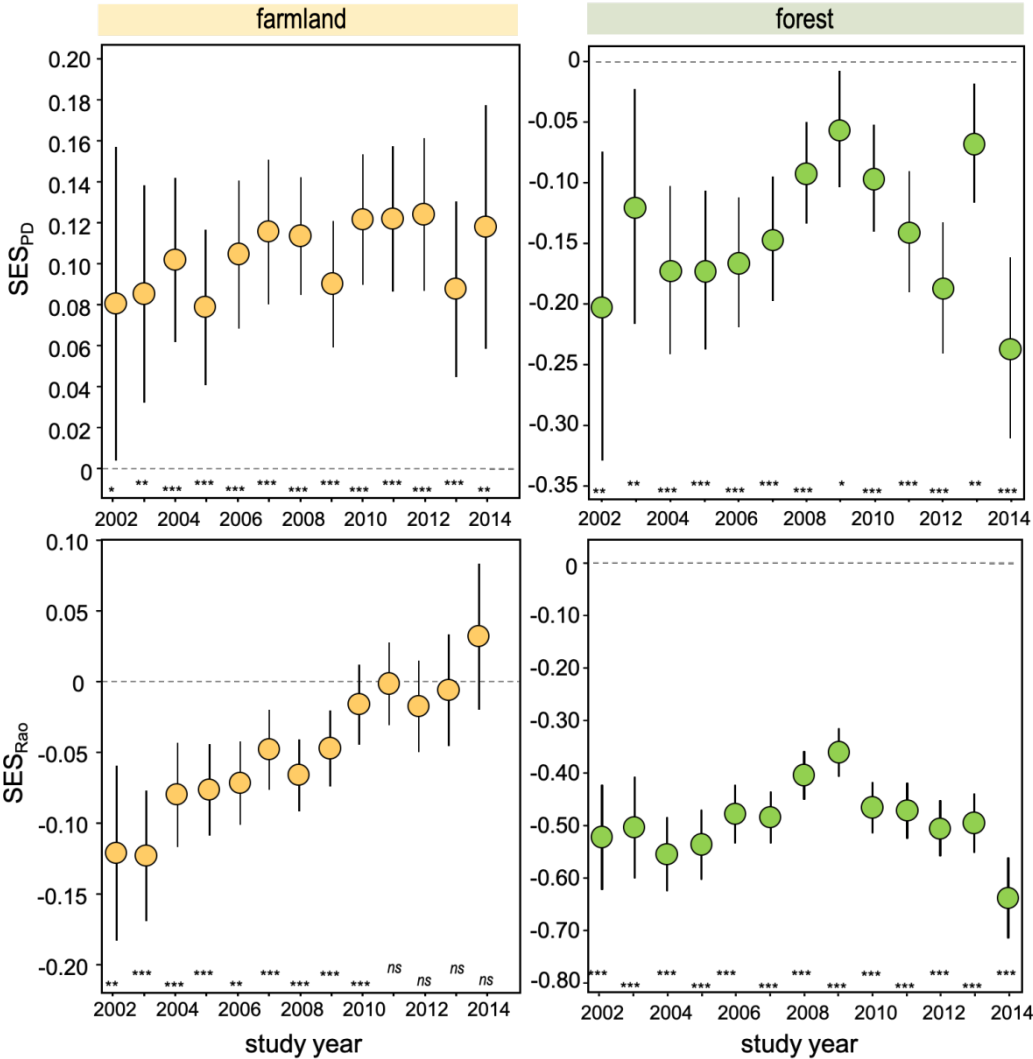
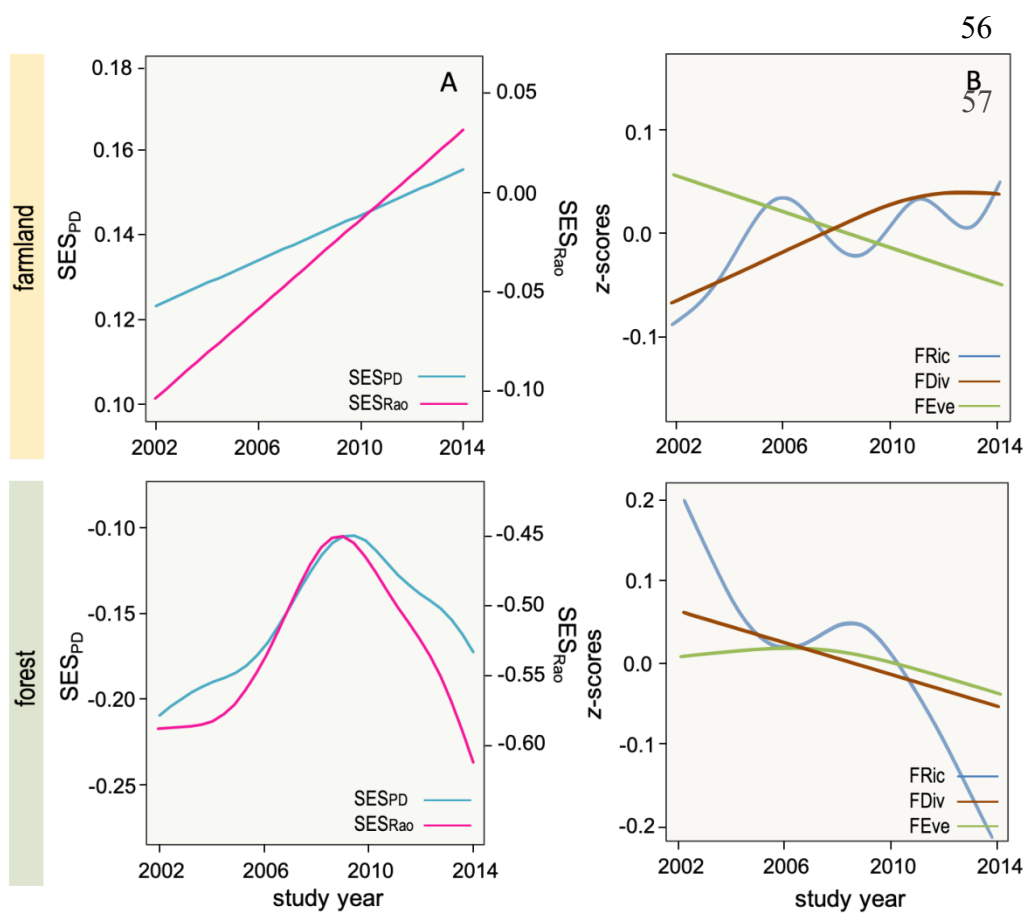


Figure 2





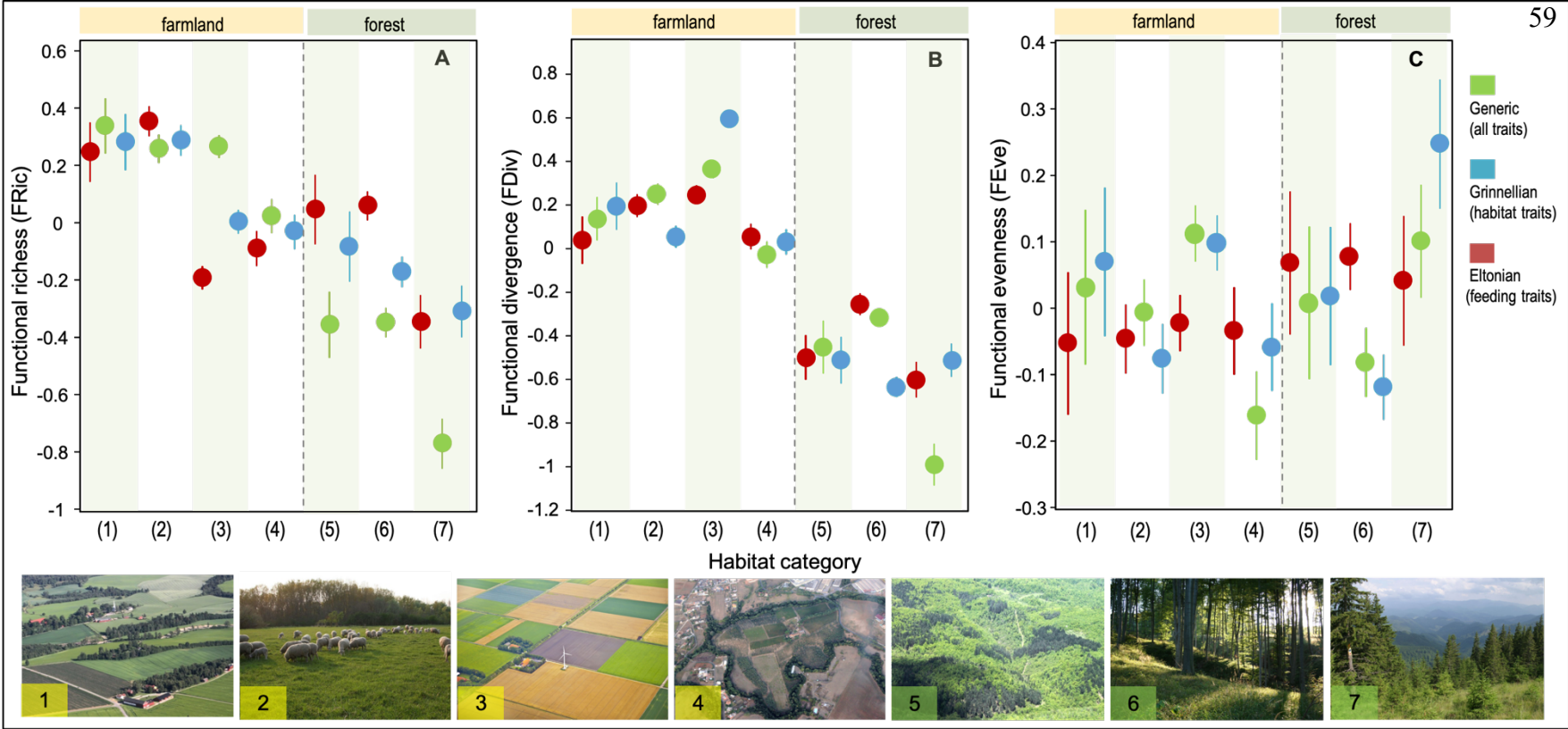


Figure 5

